

Product datasheet for **TA337745**

LRRTM3 Rabbit Polyclonal Antibody

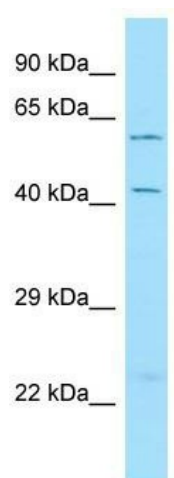
Product data:

Product Type:	Primary Antibodies
Applications:	WB
Recommended Dilution:	WB
Reactivity:	Human
Host:	Rabbit
Isotype:	IgG
Clonality:	Polyclonal
Immunogen:	The immunogen for anti-LRRTM3 antibody is: synthetic peptide directed towards the C-terminal region of Human LRRTM3. Synthetic peptide located within the following region: SLMRRHRKKKRQSLKQMTPTSTQEFYVDYKPTNTETSEMLLNGTGPCTYNK
Formulation:	Liquid. Purified antibody supplied in 1x PBS buffer with 0.09% (w/v) sodium azide and 2% sucrose.
Purification:	Affinity Purified
Conjugation:	Unconjugated
Storage:	Store at -20°C as received.
Stability:	Stable for 12 months from date of receipt.
Predicted Protein Size:	63 kDa
Gene Name:	leucine rich repeat transmembrane neuronal 3
Database Link:	NP_821079 Entrez Gene 347731 Human Q86VH5
Background:	LRRTM3 may play a role in the development and maintenance of the vertebrate nervous system.
Synonyms:	MGC131810
Note:	Immunogen Sequence Homology: Dog: 100%; Pig: 100%; Rat: 100%; Horse: 100%; Human: 100%; Mouse: 100%; Bovine: 100%; Rabbit: 100%; Guinea pig: 100%
Protein Families:	Transmembrane



[View online »](#)

Product images:



WB Suggested Anti-LRRTM3 Antibody; Titration:
1.0 ug/ml; Positive Control: 293T Whole Cell