

Product datasheet for **TA337744**

TUBB2B Rabbit Polyclonal Antibody

Product data:

Product Type:	Primary Antibodies
Applications:	WB
Recommended Dilution:	WB
Reactivity:	Human
Host:	Rabbit
Isotype:	IgG
Clonality:	Polyclonal
Immunogen:	The immunogen for anti-TUBB2B antibody is: synthetic peptide directed towards the N-terminal region of Human TUBB2B. Synthetic peptide located within the following region: GGGTGS GMGTLLISKIREEYPDRIMNTFSVMPSPKVSDTVVEPYNATLSV
Formulation:	Liquid. Purified antibody supplied in 1x PBS buffer with 0.09% (w/v) sodium azide and 2% sucrose. <i>Note that this product is shipped as lyophilized powder to China customers.</i>
Purification:	Affinity Purified
Conjugation:	Unconjugated
Storage:	Store at -20°C as received.
Stability:	Stable for 12 months from date of receipt.
Predicted Protein Size:	50 kDa
Gene Name:	tubulin beta 2B class IIb
Database Link:	NP_821080 Entrez Gene 347733 Human Q9BVA1
Background:	The protein encoded by this gene is a beta isoform of tubulin, which binds GTP and is a major component of microtubules. This gene is highly similar to TUBB2A and TUBB2C. Defects in this gene are a cause of asymmetric polymicrogyria.
Synonyms:	bA506K6.1; PMGYSA
Note:	Immunogen Sequence Homology: Rat: 100%; Human: 100%; Mouse: 100%; Sheep: 100%; Bovine: 100%

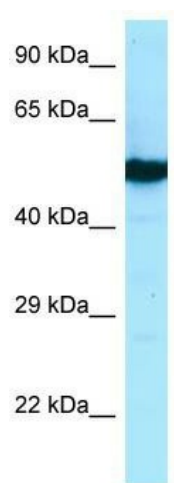


[View online »](#)

Protein Families: Druggable Genome

Protein Pathways: Gap junction, Pathogenic Escherichia coli infection

Product images:



WB Suggested Anti-TUBB2B Antibody; Titration:
1.0 ug/ml; Positive Control: MCF7 Whole Cell