

Product datasheet for **TA337743**

GPIHBP1 Rabbit Polyclonal Antibody

Product data:

Product Type:	Primary Antibodies
Applications:	WB
Recommended Dilution:	WB
Reactivity:	Human
Host:	Rabbit
Isotype:	IgG
Clonality:	Polyclonal
Immunogen:	The immunogen for anti-GPIHBP1 antibody is: synthetic peptide directed towards the C-terminal region of Human GPIHBP1. Synthetic peptide located within the following region: QVTMTCCQSSLCNVPPWQSSRVQDPTGKGAGGPRGSSETVGAALLLNLLA
Formulation:	Liquid. Purified antibody supplied in 1x PBS buffer with 0.09% (w/v) sodium azide and 2% sucrose. <i>Note that this product is shipped as lyophilized powder to China customers.</i>
Purification:	Affinity Purified
Conjugation:	Unconjugated
Storage:	Store at -20°C as received.
Stability:	Stable for 12 months from date of receipt.
Predicted Protein Size:	18 kDa
Gene Name:	glycosylphosphatidylinositol anchored high density lipoprotein binding protein 1
Database Link:	NP_835466 Entrez Gene 338328 Human Q8IV16
Background:	Dietary fats are packaged by intestine into triglyceride-rich lipoproteins called chylomicrons. The triglycerides in chylomicrons are hydrolyzed by lipoprotein lipase (LPL: MIM 609708) along the luminal surface of capillaries, mainly in heart, skeletal muscle, and adipose tissue. GPIHBP1 is a capillary endothelial cell protein that provides a platform for LPL-mediated processing of chylomicrons.
Synonyms:	GPI-HBP1; HYPL1D

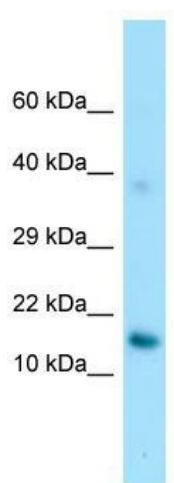


[View online »](#)

Note: Immunogen Sequence Homology: Human: 100%

Protein Families: Druggable Genome

Product images:



WB Suggested Anti-GPIHBP1 Antibody; Titration:
1.0 ug/ml; Positive Control: HepG2 Whole Cell