

Product datasheet for **TA337740**

Syntaxin binding protein 4 (STXBP4) Rabbit Polyclonal Antibody

Product data:

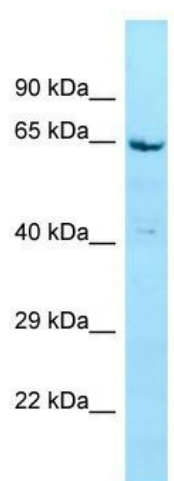
| | |
|-------------------------|---|
| Product Type: | Primary Antibodies |
| Applications: | WB |
| Recommended Dilution: | WB |
| Reactivity: | Human |
| Host: | Rabbit |
| Isotype: | IgG |
| Clonality: | Polyclonal |
| Immunogen: | The immunogen for anti-STXBP4 antibody is: synthetic peptide directed towards the N-terminal region of Human STXBP4. Synthetic peptide located within the following region: SVNKESMIGVSFEEAKSIITGAKLRLESAWEIAFIRQKSDNIQPENLSCT |
| Formulation: | Liquid. Purified antibody supplied in 1x PBS buffer with 0.09% (w/v) sodium azide and 2% sucrose. |
| Purification: | Affinity Purified |
| Conjugation: | Unconjugated |
| Storage: | Store at -20°C as received. |
| Stability: | Stable for 12 months from date of receipt. |
| Predicted Protein Size: | 62 kDa |
| Gene Name: | syntaxin binding protein 4 |
| Database Link: | NP_848604 Entrez Gene 252983 Human Q6ZWI1 |
| Background: | STXBP4 plays a role in the translocation of transport vesicles from the cytoplasm to the plasma membrane. STXBP4 inhibits the translocation of SLC2A4 from intracellular vesicles to the plasma membrane by STX4A binding and preventing the interaction between STX4A and VAMP2. Stimulation with insulin disrupts the interaction with STX4A, leading to increased levels of SLC2A4 at the plasma membrane. STXBP4 may also play a role in the regulation of insulin release by pancreatic beta cells after stimulation by glucose. |
| Synonyms: | Synip |



[View online »](#)

Note: Immunogen Sequence Homology: Human: 100%

Product images:



WB Suggested Anti-STXBP4 Antibody; Titration: 1.0 ug/ml; Positive Control: MCF7 Whole Cell