

Product datasheet for **TA337739**

Prss35 Rabbit Polyclonal Antibody

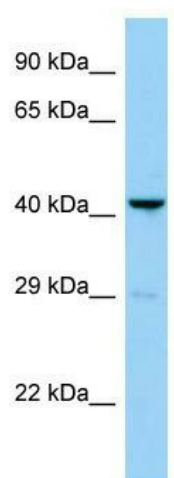
Product data:

Product Type:	Primary Antibodies
Applications:	WB
Recommended Dilution:	WB
Reactivity:	Mouse
Host:	Rabbit
Isotype:	IgG
Clonality:	Polyclonal
Immunogen:	The immunogen for anti-Prss35 antibody is: synthetic peptide directed towards the middle region of Mouse Prss35. Synthetic peptide located within the following region: HDGKDYVKGSKLRVGLKMRNKGGRKKRRGSKRSRREAESAGQSQAHLR
Formulation:	Liquid. Purified antibody supplied in 1x PBS buffer with 0.09% (w/v) sodium azide and 2% sucrose. <i>Note that this product is shipped as lyophilized powder to China customers.</i>
Purification:	Affinity Purified
Conjugation:	Unconjugated
Storage:	Store at -20°C as received.
Stability:	Stable for 12 months from date of receipt.
Predicted Protein Size:	45 kDa
Gene Name:	protease, serine 35
Database Link:	NP_848853 Entrez Gene 244954 Mouse Q8C0F9
Background:	The function of this protein remains unknown.
Synonyms:	C6orf158; dj223E3.1; MGC46520
Note:	Immunogen Sequence Homology: Pig: 100%; Rat: 100%; Human: 100%; Mouse: 100%; Guinea pig: 100%; Dog: 93%; Zebrafish: 93%; Horse: 86%; Bovine: 79%; Rabbit: 79%



[View online »](#)

Product images:



Host: Rabbit; Target Name: Prss35; Sample
Tissue: Mouse Lung lysates; Antibody Dilution:
1.0 ug/ml