

## Product datasheet for **TA337736**

### **RNF113B Rabbit Polyclonal Antibody**

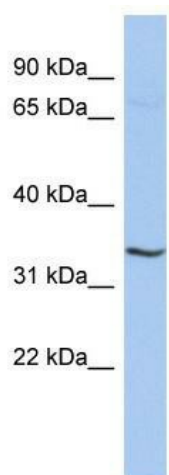
#### **Product data:**

<b>Product Type:</b>	Primary Antibodies
<b>Applications:</b>	WB
<b>Recommended Dilution:</b>	WB
<b>Reactivity:</b>	Human
<b>Host:</b>	Rabbit
<b>Isotype:</b>	IgG
<b>Clonality:</b>	Polyclonal
<b>Immunogen:</b>	The immunogen for anti-RNF113B antibody: synthetic peptide directed towards the middle region of human RNF113B. Synthetic peptide located within the following region: HDHIYRGIHSYLRYLKPKDTSMGNSSSGMARKGPIRAPGHLRATVRWDYQ
<b>Formulation:</b>	Liquid. Purified antibody supplied in 1x PBS buffer with 0.09% (w/v) sodium azide and 2% sucrose. <i>Note that this product is shipped as lyophilized powder to China customers.</i>
<b>Purification:</b>	Affinity Purified
<b>Conjugation:</b>	Unconjugated
<b>Storage:</b>	Store at -20°C as received.
<b>Stability:</b>	Stable for 12 months from date of receipt.
<b>Predicted Protein Size:</b>	36 kDa
<b>Gene Name:</b>	ring finger protein 113B
<b>Database Link:</b>	<a href="#">NP_849192</a> <a href="#">Entrez Gene 140432 Human</a> <a href="#">Q8IZP6</a>
<b>Background:</b>	RNF113B contains 1 RING-type zinc finger and 1 C3H1-type zinc finger and the function remains unknown.
<b>Synonyms:</b>	bA10G5.1; RNF161; ZNF183L1
<b>Note:</b>	Immunogen Sequence Homology: Human: 100%
<b>Protein Families:</b>	Druggable Genome



[View online »](#)

## Product images:



WB Suggested Anti-RNF113B Antibody Titration:  
0.2-1 ug/ml; ELISA Titer: 1:12500; Positive Control:  
ACHN cell lysate