

Product datasheet for **TA337735**

ARHGAP8 Rabbit Polyclonal Antibody

Product data:

Product Type:	Primary Antibodies
Applications:	WB
Recommended Dilution:	WB
Reactivity:	Human
Host:	Rabbit
Isotype:	IgG
Clonality:	Polyclonal
Immunogen:	The immunogen for anti-ARHGAP8 antibody is: synthetic peptide directed towards the middle region of Human ARHGAP8. Synthetic peptide located within the following region: PRPPLPTQQFGVSLQYLKDKNQGELIPPVLRFTVTVYLREKGLRTEGLFRR
Formulation:	Liquid. Purified antibody supplied in 1x PBS buffer with 0.09% (w/v) sodium azide and 2% sucrose. <i>Note that this product is shipped as lyophilized powder to China customers.</i>
Purification:	Affinity Purified
Conjugation:	Unconjugated
Storage:	Store at -20°C as received.
Stability:	Stable for 12 months from date of receipt.
Predicted Protein Size:	50 kDa
Gene Name:	Rho GTPase activating protein 8
Database Link:	NP_851852 Entrez Gene 23779 Human P85298



[View online »](#)

Background:

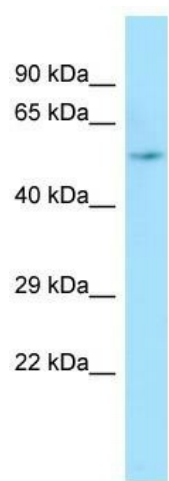
This gene encodes a member of the RHOGAP family. GAP (GTPase-activating) family proteins participate in signaling pathways that regulate cell processes involved in cytoskeletal changes. GAP proteins alternate between an active (GTP-bound) and inactive (GDP-bound) state based on the GTP:GDP ratio in the cell. This family member is a multidomain protein that functions to promote Erk activation and cell motility. Alternative splicing results in multiple transcript variants. Read-through transcripts from the upstream proline rich 5, renal (PRR5) gene into this gene also exist, which led to the original description of PRR5 and ARHGAP8 being a single gene.

Synonyms:

BPGAP1; PP610

Note:

Immunogen Sequence Homology: Dog: 100%; Horse: 100%; Human: 100%; Bovine: 100%; Pig: 93%; Rat: 93%; Mouse: 93%; Guinea pig: 93%

Product images:

WB Suggested Anti-ARHGAP8 Antibody; Titration: 1.0 ug/ml; Positive Control: 293T Whole Cell
ARHGAP8 is strongly supported by BioGPS gene expression data to be expressed in Human HEK293T cells