

## Product datasheet for **TA337734**

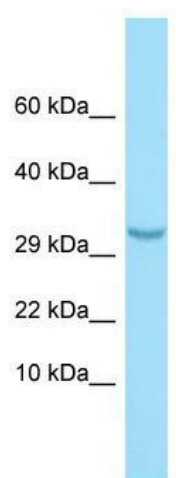
### CTRP3 (C1QTNF3) Rabbit Polyclonal Antibody

#### Product data:

Product Type:	Primary Antibodies
Applications:	WB
Recommended Dilution:	WB
Reactivity:	Human
Host:	Rabbit
Isotype:	IgG
Clonality:	Polyclonal
Immunogen:	The immunogen for anti-C1QTNF3 antibody is: synthetic peptide directed towards the N-terminal region of Human C1QTNF3. Synthetic peptide located within the following region: TNKVVARIVQSHQQTGRSGSRREKVRERSHPKTGTVDNNTSTDLKSLRPD
Formulation:	Liquid. Purified antibody supplied in 1x PBS buffer with 0.09% (w/v) sodium azide and 2% sucrose. <i>Note that this product is shipped as lyophilized powder to China customers.</i>
Purification:	Affinity Purified
Conjugation:	Unconjugated
Storage:	Store at -20°C as received.
Stability:	Stable for 12 months from date of receipt.
Predicted Protein Size:	35 kDa
Gene Name:	C1q and tumor necrosis factor related protein 3
Database Link:	<a href="#">NP_852100</a> <a href="#">Entrez Gene 114899 Human</a> <a href="#">Q9BXJ4</a>
Background:	The function of this protein remains unknown.
Synonyms:	C1ATNF3; CORCS; CORS; CORS-26; CORS26; CTRP3
Note:	Immunogen Sequence Homology: Dog: 100%; Pig: 100%; Rat: 100%; Human: 100%; Mouse: 79%
Protein Families:	Secreted Protein



[View online »](#)

**Product images:**

WB Suggested Anti-C1QTNF3 Antibody; Titration:  
1.0 ug/ml; Positive Control: MCF7 Whole Cell