

Product datasheet for **TA337733**

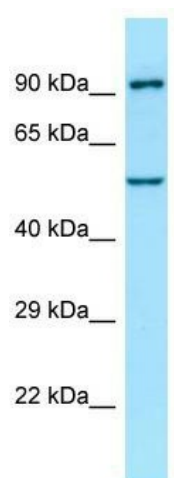
SPG3A (ATL1) Rabbit Polyclonal Antibody

Product data:

Product Type:	Primary Antibodies
Applications:	WB
Recommended Dilution:	WB
Reactivity:	Human
Host:	Rabbit
Isotype:	IgG
Clonality:	Polyclonal
Immunogen:	The immunogen for anti-SPG3A antibody is: synthetic peptide directed towards the C-terminal region of Human SPG3A. Synthetic peptide located within the following region: DQVAAALWDQGSTNEALYKLYSAAATHRHLYHQAFPTPKSESTEQSEKKK
Formulation:	Liquid. Purified antibody supplied in 1x PBS buffer with 0.09% (w/v) sodium azide and 2% sucrose. <i>Note that this product is shipped as lyophilized powder to China customers.</i>
Purification:	Affinity Purified
Conjugation:	Unconjugated
Storage:	Store at -20°C as received.
Stability:	Stable for 12 months from date of receipt.
Predicted Protein Size:	52 kDa
Gene Name:	atlastin GTPase 1
Database Link:	NP_853629 Entrez Gene 51062 Human Q8WXF7
Background:	The function of this protein remains unknown.
Synonyms:	AD-FSP; atlastin1; FSP1; GBP3; HSN1D; SPG3; SPG3A
Note:	Immunogen Sequence Homology: Dog: 100%; Pig: 100%; Horse: 100%; Human: 100%; Bovine: 100%; Rat: 92%; Rabbit: 92%; Mouse: 77%
Protein Families:	Druggable Genome, Transmembrane



[View online »](#)

Product images:

Host: Rabbit; Target Name: SPG3A; Sample Tissue: Fetal Brain lysates; Antibody Dilution: 1.0 ug/ml