

## Product datasheet for **TA337732**

### VPS13B Rabbit Polyclonal Antibody

#### Product data:

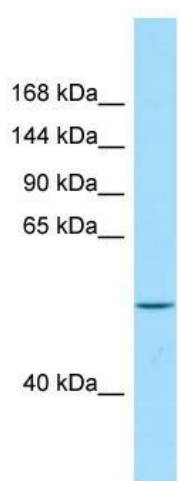
Product Type:	Primary Antibodies
Applications:	WB
Recommended Dilution:	WB
Reactivity:	Human
Host:	Rabbit
Isotype:	IgG
Clonality:	Polyclonal
Immunogen:	The immunogen for anti-VPS13B antibody is: synthetic peptide directed towards the N-terminal region of Human VPS13B. Synthetic peptide located within the following region: SEPVVITINTMECILKLDGIQDDHESCGSNSTNRSTAESTKSSIKPRRM
Formulation:	Liquid. Purified antibody supplied in 1x PBS buffer with 0.09% (w/v) sodium azide and 2% sucrose. <i>Note that this product is shipped as lyophilized powder to China customers.</i>
Purification:	Affinity Purified
Conjugation:	Unconjugated
Storage:	Store at -20°C as received.
Stability:	Stable for 12 months from date of receipt.
Predicted Protein Size:	47 kDa
Gene Name:	vacuolar protein sorting 13 homolog B
Database Link:	<a href="#">NP_858047</a> <a href="#">Entrez Gene 157680 Human</a> <a href="#">Q7Z7G8</a>
Background:	This gene encodes a potential transmembrane protein that may function in vesicle-mediated transport and sorting of proteins within the cell. This protein may play a role in the development and the function of the eye, hematological system, and central nervous system. Mutations in this gene have been associated with Cohen syndrome. Multiple splice variants encoding distinct isoforms have been identified for this gene.
Synonyms:	CHS1; COH1



[View online »](#)

**Note:** Immunogen Sequence Homology: Human: 100%; Pig: 93%; Rat: 93%; Mouse: 93%; Guinea pig: 93%; Horse: 86%; Bovine: 86%; Rabbit: 86%; Dog: 79%

### Product images:



WB Suggested Anti-VPS13B Antibody; Titration:  
1.0 ug/ml; Positive Control: Fetal Heart