

Product datasheet for **TA337727**

BMP8A Rabbit Polyclonal Antibody

Product data:

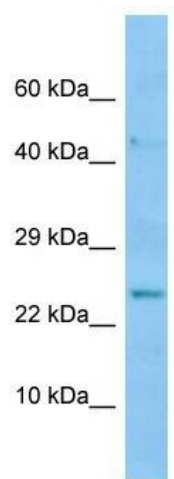
Product Type:	Primary Antibodies
Applications:	WB
Recommended Dilution:	WB
Reactivity:	Human
Host:	Rabbit
Isotype:	IgG
Clonality:	Polyclonal
Immunogen:	The immunogen for anti-BMP8A antibody is: synthetic peptide directed towards the middle region of Human BMP8A. Synthetic peptide located within the following region: VRPLRRRQPKKTNELPQANRLPGIFDDVHGSHGRQVCRRHELYVSFQDLG
Formulation:	Liquid. Purified antibody supplied in 1x PBS buffer with 0.09% (w/v) sodium azide and 2% sucrose. <i>Note that this product is shipped as lyophilized powder to China customers.</i>
Purification:	Affinity Purified
Conjugation:	Unconjugated
Storage:	Store at -20°C as received.
Stability:	Stable for 12 months from date of receipt.
Predicted Protein Size:	26 kDa
Gene Name:	bone morphogenetic protein 8a
Database Link:	NP_861525 Entrez Gene 353500 Human Q7Z5Y6
Background:	The function of this protein remains unknown.
Synonyms:	FLJ14351; FLJ45264
Note:	Immunogen Sequence Homology: Human: 100%; Dog: 83%; Pig: 83%; Rat: 83%; Mouse: 83%; Rabbit: 83%; Guinea pig: 83%; Horse: 75%
Protein Families:	Secreted Protein



[View online »](#)

Protein Pathways: Hedgehog signaling pathway, TGF-beta signaling pathway

Product images:



Host: Rabbit; Target Name: BMP8A; Sample
Tissue: 293T Whole cell lysates; Antibody Dilution:
1.0 ug/ml