

## Product datasheet for **TA337724**

### Gastrokine 2 (GKN2) Rabbit Polyclonal Antibody

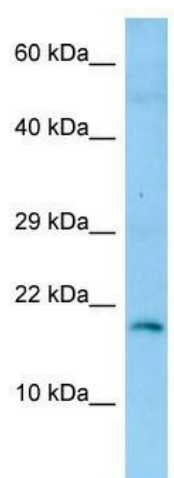
#### Product data:

Product Type:	Primary Antibodies
Applications:	WB
Recommended Dilution:	WB
Reactivity:	Human
Host:	Rabbit
Isotype:	IgG
Clonality:	Polyclonal
Immunogen:	The immunogen for anti-GKN2 antibody is: synthetic peptide directed towards the N-terminal region of Human GKN2. Synthetic peptide located within the following region: NIISPSNNGGNVQETVTIDNEKNTAIIHAGSCSSTTIFDYKHGYIASR
Formulation:	Liquid. Purified antibody supplied in 1x PBS buffer with 0.09% (w/v) sodium azide and 2% sucrose. <i>Note that this product is shipped as lyophilized powder to China customers.</i>
Purification:	Affinity Purified
Conjugation:	Unconjugated
Storage:	Store at -20°C as received.
Stability:	Stable for 12 months from date of receipt.
Predicted Protein Size:	18 kDa
Gene Name:	gastrokine 2
Database Link:	<a href="#">NP_872342</a> <a href="#">Entrez Gene 200504 Human</a> <a href="#">Q86XP6</a>
Background:	The function of this protein remains unknown.
Synonyms:	BRICD1B; GDDR; PRO813; TFIZ1; VLT1465
Note:	Immunogen Sequence Homology: Human: 100%; Rat: 92%; Horse: 91%; Dog: 85%; Mouse: 85%; Rabbit: 77%
Protein Families:	Secreted Protein



[View online »](#)

## Product images:



WB Suggested Anti-GKN2 Antibody; Titration: 1.0 ug/ml; Positive Control: Fetal Brain