

Product datasheet for **TA337723**

5HT3E (HTR3E) Rabbit Polyclonal Antibody

Product data:

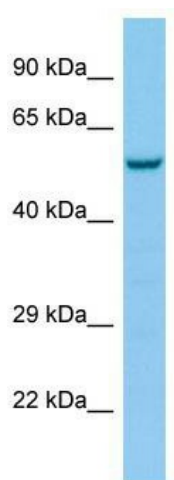
Product Type:	Primary Antibodies
Applications:	WB
Recommended Dilution:	WB
Reactivity:	Human
Host:	Rabbit
Isotype:	IgG
Clonality:	Polyclonal
Immunogen:	The immunogen for anti-HTR3E antibody is: synthetic peptide directed towards the C-terminal region of Human HTR3E. Synthetic peptide located within the following region: GPAAELTGGSEWTRAQREHEAQKQHSVELWLQFSHAMDAMLFRLLFLM
Formulation:	Liquid. Purified antibody supplied in 1x PBS buffer with 0.09% (w/v) sodium azide and 2% sucrose. <i>Note that this product is shipped as lyophilized powder to China customers.</i>
Purification:	Affinity Purified
Conjugation:	Unconjugated
Storage:	Store at -20°C as received.
Stability:	Stable for 12 months from date of receipt.
Predicted Protein Size:	53 kDa
Gene Name:	5-hydroxytryptamine receptor 3E
Database Link:	NP_872395 Entrez Gene 285242 Human A5X5Y0
Background:	This locus encodes a 5-hydroxytryptamine (serotonin) receptor subunit. The encoded protein, subunit E, may play a role in neurotransmission in myenteric neurons. Genes encoding subunits C, D and E form a cluster on chromosome 3. Alternatively spliced transcript variants encoding distinct isoforms have been described.
Synonyms:	5-HT3-E; 5-HT3c1; 5-HT3E
Note:	Immunogen Sequence Homology: Human: 100%; Dog: 77%; Rabbit: 77%



[View online »](#)

Protein Families: Druggable Genome, Ion Channels: Cys-loop Receptors, Transmembrane

Product images:



Host: Rabbit; Target Name: HTR3E; Sample Tissue: NCI-H226 Whole Cell lysates; Antibody Dilution: 1.0 ug/ml