

Product datasheet for **TA337722**

CREM Rabbit Polyclonal Antibody

Product data:

Product Type:	Primary Antibodies
Applications:	WB
Recommended Dilution:	WB
Reactivity:	Mouse, Rat
Host:	Rabbit
Isotype:	IgG
Clonality:	Polyclonal
Immunogen:	The immunogen for anti-Crem antibody is: synthetic peptide directed towards the C-terminal region of Rat Crem. Synthetic peptide located within the following region: KNREAARECRRKKKEYVKLENRVAVLENQNKTLEELKALKDLYCHKAE
Formulation:	Liquid. Purified antibody supplied in 1x PBS buffer with 0.09% (w/v) sodium azide and 2% sucrose. <i>Note that this product is shipped as lyophilized powder to China customers.</i>
Purification:	Affinity Purified
Conjugation:	Unconjugated
Storage:	Store at -20°C as received.
Stability:	Stable for 12 months from date of receipt.
Predicted Protein Size:	39 kDa
Gene Name:	cAMP responsive element modulator
Database Link:	NP_874386 Entrez Gene 12916 Mouse Entrez Gene 25620 Rat Q03060
Background:	Crem is a transcriptional regulator that binds the cAMP response element (CRE), a sequence present in many viral and cellular promoters. Isoforms are either transcriptional activators or repressors. Isoform Delta is an activator. Crem plays a role in spermatogenesis and is involved in spermatid maturation. Binding of isoform Tau (activator) to CRE is increased by CREB3L4. The CREM isoform Tau-CREB3L4 heterodimer functions through CRE and may recruit HIRA to CRE to regulate histone exchange.



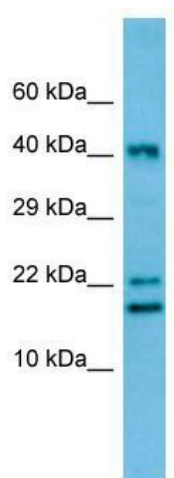
[View online »](#)

Synonyms: CREM-2; hCREM-2; ICER

Note: Immunogen Sequence Homology: Dog: 100%; Pig: 100%; Rat: 100%; Horse: 100%; Human: 100%; Mouse: 100%; Sheep: 100%; Bovine: 100%; Rabbit: 100%; Zebrafish: 100%; Guinea pig: 100%

Protein Families: Druggable Genome, Transcription Factors

Product images:



WB Suggested Anti-Crem Antibody; Titration: 1.0 ug/ml; Positive Control: Rat Thymus