

## Product datasheet for TA337721

### CREM Rabbit Polyclonal Antibody

#### Product data:

Product Type:	Primary Antibodies
Applications:	WB
Recommended Dilution:	WB
Reactivity:	Human
Host:	Rabbit
Isotype:	IgG
Clonality:	Polyclonal
Immunogen:	The immunogen for anti-CREM antibody: synthetic peptide directed towards the N terminal of human CREM. Synthetic peptide located within the following region: MAAATGDMPTYQIRAPTAALPQGVVMAASPGSLHSPQQLAEEATRKRELR
Formulation:	Liquid. Purified antibody supplied in 1x PBS buffer with 0.09% (w/v) sodium azide and 2% sucrose. <i>Note that this product is shipped as lyophilized powder to China customers.</i>
Purification:	Protein A purified
Conjugation:	Unconjugated
Storage:	Store at -20°C as received.
Stability:	Stable for 12 months from date of receipt.
Predicted Protein Size:	13 kDa
Gene Name:	cAMP responsive element modulator
Database Link:	<a href="#">NP_874386</a> <a href="#">Entrez Gene 1390 Human</a> <a href="#">Q03060</a>



[View online »](#)

**Background:**

CREM is a bZIP transcription factor that binds to the cAMP responsive element found in many viral and cellular promoters. It is an important component of cAMP-mediated signal transduction during the spermatogenetic cycle, as well as other complex processes. Alternative promoter and translation initiation site usage allows this gene to exert spatial and temporal specificity to cAMP responsiveness. Multiple alternatively spliced transcript variants encoding several different isoforms have been found for this gene, with some of them functioning as activators and some as repressors of transcription.

**Synonyms:**

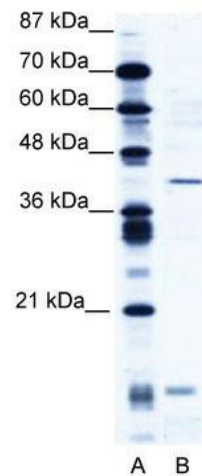
CREM-2; hCREM-2; ICER

**Note:**

Immunogen Sequence Homology: Dog: 100%; Pig: 100%; Rat: 100%; Goat: 100%; Horse: 100%; Human: 100%; Mouse: 100%; Sheep: 100%; Bovine: 100%; Rabbit: 100%; Guinea pig: 100%; Zebrafish: 79%

**Protein Families:**

Druggable Genome, Transcription Factors

**Product images:**

WB Suggested Anti-CREM Antibody Titration: 2.5 ug/ml; ELISA Titer: 1:1562500; Positive Control: Jurkat cell lysate