

## Product datasheet for **TA337720**

### SUMF1 Rabbit Polyclonal Antibody

#### Product data:

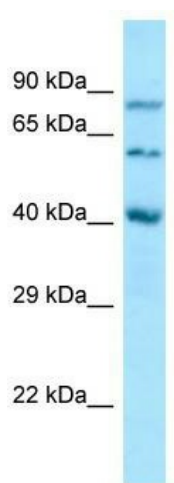
Product Type:	Primary Antibodies
Applications:	WB
Recommended Dilution:	WB
Reactivity:	Human
Host:	Rabbit
Isotype:	IgG
Clonality:	Polyclonal
Immunogen:	The immunogen for anti-SUMF1 antibody is: synthetic peptide directed towards the N-terminal region of Human SUMF1. Synthetic peptide located within the following region: SREANAPGPVPGERQLAHSKMVPIAGVFTMGTDPPQIKQDGEAPARRVT
Formulation:	Liquid. Purified antibody supplied in 1x PBS buffer with 0.09% (w/v) sodium azide and 2% sucrose. <i>Note that this product is shipped as lyophilized powder to China customers.</i>
Purification:	Affinity Purified
Conjugation:	Unconjugated
Storage:	Store at -20°C as received.
Stability:	Stable for 12 months from date of receipt.
Predicted Protein Size:	41 kDa
Gene Name:	sulfatase modifying factor 1
Database Link:	<a href="#">NP_877437</a> <a href="#">Entrez Gene 285362 Human</a> <a href="#">Q8NBK3</a>
Background:	This gene encodes an enzyme that catalyzes the hydrolysis of sulfate esters by oxidizing a cysteine residue in the substrate sulfatase to an active site 3-oxoalanine residue, which is also known as C-alpha-formylglycine. Mutations in this gene cause multiple sulfatase deficiency, a lysosomal storage disorder. Alternative splicing results in multiple transcript variants.
Synonyms:	AAPA3037; FGE; UNQ3037



[View online »](#)

**Note:** Immunogen Sequence Homology: Dog: 100%; Pig: 100%; Rat: 100%; Horse: 100%; Human: 100%; Bovine: 100%; Rabbit: 100%; Guinea pig: 100%; Mouse: 93%

### Product images:



Host: Rabbit; Target Name: SUMF1; Sample Tissue: PANC1 Whole cell lysates; Antibody Dilution: 1.0 ug/ml