

## Product datasheet for **TA337719**

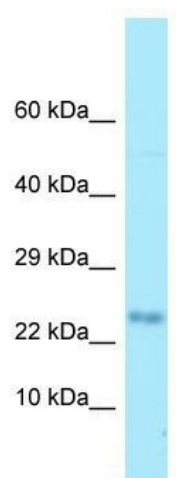
### MOBP Rabbit Polyclonal Antibody

#### Product data:

Product Type:	Primary Antibodies
Applications:	WB
Recommended Dilution:	WB
Reactivity:	Human
Host:	Rabbit
Isotype:	IgG
Clonality:	Polyclonal
Immunogen:	The immunogen for anti-MOBP antibody is: synthetic peptide directed towards the N-terminal region of Human MOBP. Synthetic peptide located within the following region: SQKPAKEGPRLSKNQYSEHFSIHCCPPFTFLNSKKEIVDRKYSICKSGC
Formulation:	Liquid. Purified antibody supplied in 1x PBS buffer with 0.09% (w/v) sodium azide and 2% sucrose.
Purification:	Affinity Purified
Conjugation:	Unconjugated
Storage:	Store at -20°C as received.
Stability:	Stable for 12 months from date of receipt.
Predicted Protein Size:	22 kDa
Gene Name:	myelin-associated oligodendrocyte basic protein
Database Link:	<a href="#">NP_891980</a> <a href="#">Entrez Gene 4336 Human</a> <a href="#">Q13875</a>
Background:	The function of this protein remains unknown.
Synonyms:	MGC87379
Note:	Immunogen Sequence Homology: Human: 100%; Dog: 93%; Pig: 93%; Rat: 93%; Mouse: 93%; Bovine: 93%; Horse: 92%; Rabbit: 86%; Guinea pig: 85%



[View online »](#)

**Product images:**

Host: Rabbit; Target Name: MOBP; Sample  
Tissue: HCT15 Whole Cell lysates; Antibody  
Dilution: 1.0 ug/ml