

Product datasheet for **TA337716**

INDOL1 (IDO2) Rabbit Polyclonal Antibody

Product data:

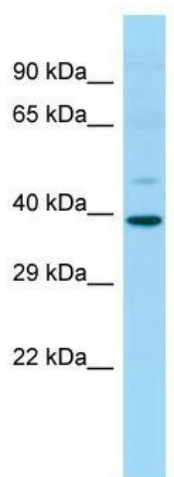
Product Type:	Primary Antibodies
Applications:	WB
Recommended Dilution:	WB
Reactivity:	Human
Host:	Rabbit
Isotype:	IgG
Clonality:	Polyclonal
Immunogen:	The immunogen for anti-IDO2 antibody is: synthetic peptide directed towards the C-terminal region of Human IDO2. Synthetic peptide located within the following region: LITAAAKAKHKGKPNHLPQALKDRGTGGTAVMSFLKSVRDKTLESILH
Formulation:	Liquid. Purified antibody supplied in 1x PBS buffer with 0.09% (w/v) sodium azide and 2% sucrose. <i>Note that this product is shipped as lyophilized powder to China customers.</i>
Purification:	Affinity Purified
Conjugation:	Unconjugated
Storage:	Store at -20°C as received.
Stability:	Stable for 12 months from date of receipt.
Predicted Protein Size:	47 kDa
Gene Name:	indoleamine 2,3-dioxygenase 2
Database Link:	NP_919270 Entrez Gene 169355 Human Q6ZQW0
Background:	Along with the enzymes encoded by the INDO and TDO2 genes, the enzyme encoded by the INDOL1 gene metabolizes tryptophan in the kynurenine pathway.
Synonyms:	INDOL1
Note:	Immunogen Sequence Homology: Human: 100%; Bovine: 100%; Dog: 93%; Horse: 92%; Pig: 91%; Mouse: 83%; Rat: 79%; Rabbit: 79%



[View online »](#)

Protein Pathways: Metabolic pathways, Tryptophan metabolism

Product images:



WB Suggested Anti-IDO2 Antibody; Titration: 1.0 ug/ml; Positive Control: Fetal Brain