

Product datasheet for **TA337713**

ZNF568 Rabbit Polyclonal Antibody

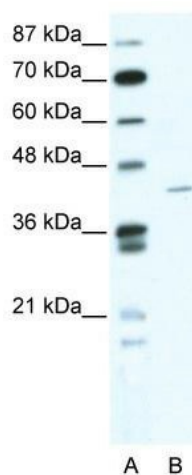
Product data:

Product Type:	Primary Antibodies
Applications:	WB
Recommended Dilution:	WB
Reactivity:	Human
Host:	Rabbit
Isotype:	IgG
Clonality:	Polyclonal
Immunogen:	The immunogen for anti-ZNF568 antibody: synthetic peptide directed towards the N terminal of human ZNF568. Synthetic peptide located within the following region: VWEVDEQVKKQQETLVRKVTISIKKILIKEKVIECKKVAKIFPLSSDIVT
Formulation:	Liquid. Purified antibody supplied in 1x PBS buffer with 0.09% (w/v) sodium azide and 2% sucrose. <i>Note that this product is shipped as lyophilized powder to China customers.</i>
Purification:	Protein A purified
Conjugation:	Unconjugated
Storage:	Store at -20°C as received.
Stability:	Stable for 12 months from date of receipt.
Predicted Protein Size:	44 kDa
Gene Name:	zinc finger protein 568
Database Link:	NP_940941 Entrez Gene 374900 Human Q3ZCX4
Background:	May be involved in transcriptional regulation.
Synonyms:	DKFZp667O0524; DKFZp686B0797; FLJ34820; FLJ35804
Note:	Immunogen Sequence Homology: Dog: 100%; Horse: 100%; Human: 100%; Pig: 93%; Bovine: 93%
Protein Families:	Transcription Factors



[View online »](#)

Product images:



WB Suggested Anti-ZNF568 Antibody Titration:
1.25 ug/ml; ELISA Titer: 1:12500; Positive Control:
HepG2 cell lysate