

## Product datasheet for **TA337711**

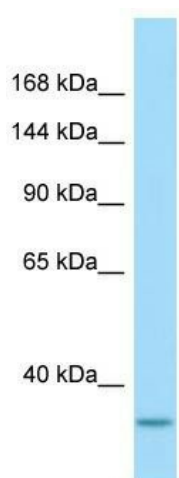
### SEC24C Rabbit Polyclonal Antibody

#### Product data:

Product Type:	Primary Antibodies
Applications:	WB
Recommended Dilution:	WB
Reactivity:	Human
Host:	Rabbit
Isotype:	IgG
Clonality:	Polyclonal
Immunogen:	The immunogen for anti-SEC24C antibody is: synthetic peptide directed towards the N-terminal region of Human SEC24C. Synthetic peptide located within the following region: AVDFFGAFYMSNTTDVELAGLDGDKTVTVEFKHDDRLEESGALLQCALL
Formulation:	Liquid. Purified antibody supplied in 1x PBS buffer with 0.09% (w/v) sodium azide and 2% sucrose.
Purification:	Affinity Purified
Conjugation:	Unconjugated
Storage:	Store at -20°C as received.
Stability:	Stable for 12 months from date of receipt.
Predicted Protein Size:	37 kDa
Gene Name:	SEC24 homolog C, COPII coat complex component
Database Link:	<a href="#">NP_940999</a> <a href="#">Entrez Gene 9632 Human</a> <a href="#">P53992</a>
Background:	The function of this protein remains unknown.
Synonyms:	KIAA0079
Note:	Immunogen Sequence Homology: Pig: 100%; Human: 100%; Dog: 93%; Rat: 93%; Horse: 93%; Mouse: 93%; Bovine: 93%; Rabbit: 93%; Guinea pig: 93%; Zebrafish: 86%



[View online »](#)

**Product images:**

Host: Rabbit; Target Name: SEC24C; Sample  
Tissue: U937 Whole Cell lysates; Antibody  
Dilution: 1.0 ug/ml