

Product datasheet for **TA337710**

Prickle 2 (PRICKLE2) Rabbit Polyclonal Antibody

Product data:

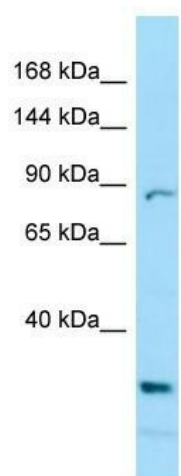
Product Type:	Primary Antibodies
Applications:	WB
Recommended Dilution:	WB
Reactivity:	Human
Host:	Rabbit
Isotype:	IgG
Clonality:	Polyclonal
Immunogen:	The immunogen for anti-PRICKLE2 antibody is: synthetic peptide directed towards the C-terminal region of Human PRICKLE2. Synthetic peptide located within the following region: IPQPARLRVYVTSDELLHKYSSYGLPKSSTLGGRGQLHSRKRQKSKNCIIS
Formulation:	Liquid. Purified antibody supplied in 1x PBS buffer with 0.09% (w/v) sodium azide and 2% sucrose. <i>Note that this product is shipped as lyophilized powder to China customers.</i>
Purification:	Affinity Purified
Conjugation:	Unconjugated
Storage:	Store at -20°C as received.
Stability:	Stable for 12 months from date of receipt.
Predicted Protein Size:	95 kDa
Gene Name:	prickle planar cell polarity protein 2
Database Link:	NP_942559 Entrez Gene 166336 Human Q7Z3G6
Background:	This gene encodes a homolog of Drosophila prickle. The exact function of this gene is not known, however, studies in mice suggest that it may be involved in seizure prevention. Mutations in this gene are associated with progressive myoclonic epilepsy type 5.
Synonyms:	EPM5
Note:	Immunogen Sequence Homology: Dog: 100%; Pig: 100%; Rat: 100%; Horse: 100%; Human: 100%; Mouse: 100%; Bovine: 100%; Rabbit: 100%; Guinea pig: 100%; Zebrafish: 86%



[View online »](#)

Protein Pathways: Wnt signaling pathway

Product images:



WB Suggested Anti-PRICKLE2 Antibody; Titration: 1.0 ug/ml; Positive Control: Jurkat Whole Cell