

Product datasheet for **TA337708**

PTGES2 Rabbit Polyclonal Antibody

Product data:

Product Type:	Primary Antibodies
Applications:	WB
Recommended Dilution:	WB
Reactivity:	Human
Host:	Rabbit
Isotype:	IgG
Clonality:	Polyclonal
Immunogen:	The immunogen for anti-PTGES2 antibody is: synthetic peptide directed towards the N-terminal region of Human PTGES2. Synthetic peptide located within the following region: KEVTEFGNKYWLMLNEKEAQQVYGGKEARTEEMKWRQWADDWLVLHISP
Formulation:	Liquid. Purified antibody supplied in 1x PBS buffer with 0.09% (w/v) sodium azide and 2% sucrose. <i>Note that this product is shipped as lyophilized powder to China customers.</i>
Purification:	Affinity Purified
Conjugation:	Unconjugated
Storage:	Store at -20°C as received.
Stability:	Stable for 12 months from date of receipt.
Predicted Protein Size:	21 kDa
Gene Name:	prostaglandin E synthase 2
Database Link:	NP_945176 Entrez Gene 80142 Human Q9H7Z7
Background:	The protein encoded by this gene is a membrane-associated prostaglandin E synthase, which catalyzes the conversion of prostaglandin H2 to prostaglandin E2. This protein also has been shown to activate the transcription regulated by a gamma-interferon-activated transcription element (GATE). Multiple transcript variants have been found for this gene.
Synonyms:	C9orf15; GBF-1; GBF1; mPGES-2; PGES2

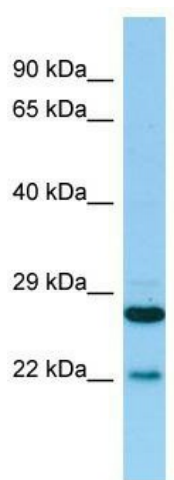


[View online »](#)

Note: Immunogen Sequence Homology: Human: 100%; Mouse: 86%; Dog: 79%; Pig: 79%; Rat: 79%; Bovine: 79%

Protein Pathways: Arachidonic acid metabolism, Metabolic pathways

Product images:



WB Suggested Anti-PTGES2 Antibody; Titration: 1.0 ug/ml; Positive Control: 721_B Whole Cell
PTGES2 is supported by BioGPS gene expression data to be expressed in 721_B