

Product datasheet for **TA337706**

TBP2 (TBPL2) Rabbit Polyclonal Antibody

Product data:

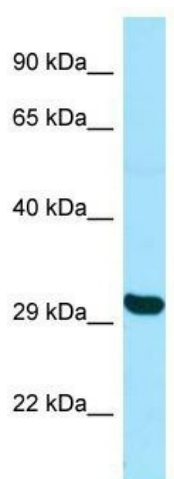
Product Type:	Primary Antibodies
Applications:	WB
Recommended Dilution:	WB
Reactivity:	Human
Host:	Rabbit
Isotype:	IgG
Clonality:	Polyclonal
Immunogen:	The immunogen for anti-TBPL2 antibody is: synthetic peptide directed towards the N-terminal region of Human TBPL2. Synthetic peptide located within the following region: SGDFSSVDLSFLPDEVTQENKDQPVISKHETEENSESQSPQSRLPSPSEQ
Formulation:	Liquid. Purified antibody supplied in 1x PBS buffer with 0.09% (w/v) sodium azide and 2% sucrose. <i>Note that this product is shipped as lyophilized powder to China customers.</i>
Purification:	Affinity Purified
Conjugation:	Unconjugated
Storage:	Store at -20°C as received.
Stability:	Stable for 12 months from date of receipt.
Predicted Protein Size:	33 kDa
Gene Name:	TATA-box binding protein like 2
Database Link:	NP_950248 Entrez Gene 387332 Human Q6SJ96
Background:	TBPL2 is a transcription factor required in complex with TAF3 for the differentiation of myoblasts into myocytes. The complex replaces TFIID at specific promoters at an early stage in the differentiation process.
Synonyms:	TBP2; TRF3
Note:	Immunogen Sequence Homology: Human: 100%



[View online »](#)

Protein Pathways: Basal transcription factors, Huntington's disease

Product images:



WB Suggested Anti-TBPL2 Antibody; Titration: 1.0 ug/ml; Positive Control: HepG2 Whole Cell