

## Product datasheet for **TA337704**

### TRIM41 Rabbit Polyclonal Antibody

#### Product data:

Product Type:	Primary Antibodies
Applications:	WB
Recommended Dilution:	WB
Reactivity:	Human
Host:	Rabbit
Isotype:	IgG
Clonality:	Polyclonal
Immunogen:	The immunogen for anti-TRIM41 antibody: synthetic peptide directed towards the middle region of human TRIM41. Synthetic peptide located within the following region: RFSADCCVLGAQGFRRSGRHYWEEPKEPSWPPAQPSLTYYVCPTDRPEFSF
Formulation:	Liquid. Purified antibody supplied in 1x PBS buffer with 0.09% (w/v) sodium azide and 2% sucrose. <i>Note that this product is shipped as lyophilized powder to China customers.</i>
Purification:	Affinity Purified
Conjugation:	Unconjugated
Storage:	Store at -20°C as received.
Stability:	Stable for 12 months from date of receipt.
Predicted Protein Size:	59 kDa
Gene Name:	tripartite motif containing 41
Database Link:	<a href="#">NP_963921</a> <a href="#">Entrez Gene 90933 Human</a> <a href="#">Q8WV44</a>
Background:	This gene encodes a member of the tripartite motif (TRIM) family. The TRIM family is characterized by a signature motif composed of a RING finger, one or more B-box domains, and a coiled-coil region. This encoded protein may play a role in protein kinase C signaling. Multiple transcript variants encoding different isoforms have been found for this gene. [provided by RefSeq, Oct 2011]
Synonyms:	RINCK

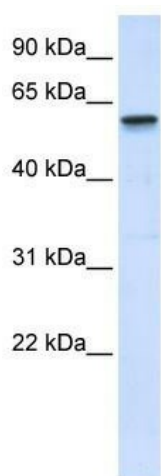


[View online »](#)

Note: Immunogen Sequence Homology: Human: 100%

Protein Families: Druggable Genome

### Product images:



WB Suggested Anti-TRIM41 Antibody Titration:  
0.2-1 ug/ml; ELISA Titer: 1:312500; Positive  
Control: Human Placenta