

Product datasheet for **TA337701**

KEAP1 Rabbit Polyclonal Antibody

Product data:

Product Type:	Primary Antibodies
Applications:	IHC, WB
Recommended Dilution:	WB, IHC
Reactivity:	Human
Host:	Rabbit
Isotype:	IgG
Clonality:	Polyclonal
Immunogen:	The immunogen for anti-KEAP1 antibody: synthetic peptide directed towards the N terminal of human KEAP1. Synthetic peptide located within the following region: SQCPGAGDAVMYASTECKAEVTPSQHGNRTFSYLEDHTKQAFGIMNEL
Formulation:	Liquid. Purified antibody supplied in 1x PBS buffer with 0.09% (w/v) sodium azide and 2% sucrose. <i>Note that this product is shipped as lyophilized powder to China customers.</i>
Purification:	Affinity Purified
Conjugation:	Unconjugated
Storage:	Store at -20°C as received.
Stability:	Stable for 12 months from date of receipt.
Predicted Protein Size:	70 kDa
Gene Name:	kelch like ECH associated protein 1
Database Link:	NP_987096 Entrez Gene 9817 Human Q14145



[View online »](#)

Background: KEAP1 contains KELCH-1 like domains, as well as a BTB/POZ domain. Kelch-like ECH-associated protein 1 interacts with NF-E2-related factor 2 in a redox-sensitive manner and the dissociation of the proteins in the cytoplasm is followed by transportation of NF-E2-related factor 2 to the nucleus. This interaction results in the expression of the catalytic subunit of gamma-glutamylcysteine synthetase. Western blots using two different antibodies against two unique regions of this protein target confirm the same apparent molecular weight in our tests. This gene encodes a protein containing KELCH-1 like domains, as well as a BTB/POZ domain. Kelch-like ECH-associated protein 1 interacts with NF-E2-related factor 2 in a redox-sensitive manner and the dissociation of the proteins in the cytoplasm is followed by transportation of NF-E2-related factor 2 to the nucleus. This interaction results in the expression of the catalytic subunit of gamma-glutamylcysteine synthetase. Two alternatively spliced transcript variants encoding the same isoform have been found for this gene.

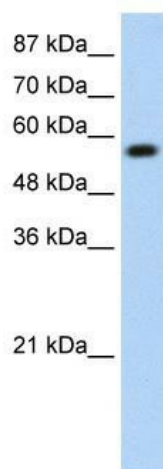
Synonyms: INrf2; KLHL19

Note: Immunogen Sequence Homology: Dog: 100%; Pig: 100%; Rat: 100%; Horse: 100%; Human: 100%; Mouse: 100%; Bovine: 100%; Rabbit: 100%; Zebrafish: 77%

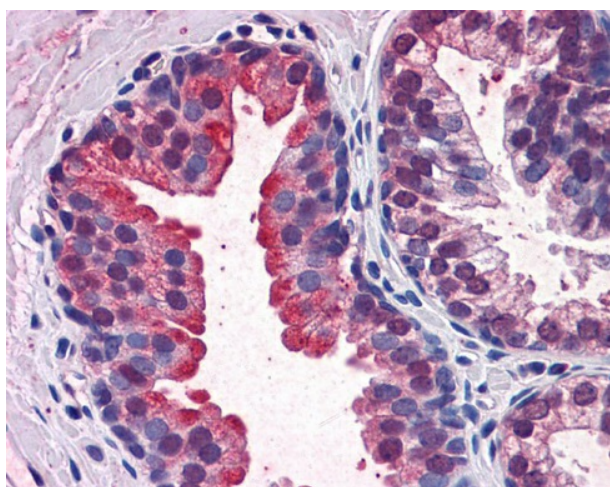
Protein Families: Transcription Factors

Protein Pathways: Ubiquitin mediated proteolysis

Product images:



WB Suggested Anti-KEAP1 Antibody Titration: 0.2-1 ug/ml; ELISA Titer: 1:312500; Positive Control: Transfected 293T



Kidney