

## Product datasheet for **TA337700**

### YY2 Rabbit Polyclonal Antibody

#### Product data:

Product Type:	Primary Antibodies
Applications:	WB
Recommended Dilution:	WB
Reactivity:	Human
Host:	Rabbit
Isotype:	IgG
Clonality:	Polyclonal
Immunogen:	The immunogen for anti-YY2 antibody is: synthetic peptide directed towards the C-terminal region of Human YY2. Synthetic peptide located within the following region: GGLPGIDLSDPKQLAEFTKVKPKRSKGEPKTVPCSYSGCEKMFRDYAAM
Formulation:	Liquid. Purified antibody supplied in 1x PBS buffer with 0.09% (w/v) sodium azide and 2% sucrose. <i>Note that this product is shipped as lyophilized powder to China customers.</i>
Purification:	Affinity Purified
Conjugation:	Unconjugated
Storage:	Store at -20°C as received.
Stability:	Stable for 12 months from date of receipt.
Predicted Protein Size:	41 kDa
Gene Name:	YY2 transcription factor
Database Link:	<a href="#">NP_996806</a> <a href="#">Entrez Gene 404281 Human</a> <a href="#">O15391</a>
Background:	The protein encoded by this gene is a transcription factor that includes several Kruppel-like zinc fingers in its C-terminal region. It possesses both activation and repression domains, and it can therefore have both positive and negative effects on the transcription of target genes. This gene has an intronless coding region, and it appears to have arisen by retrotransposition of the related YY1 transcription factor gene, which is located on chromosome 14.
Synonyms:	ZNF631

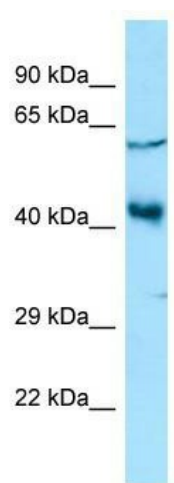


[View online »](#)

Note: Immunogen Sequence Homology: Human: 100%

Protein Families: Transcription Factors

### Product images:



WB Suggested Anti-YY2 Antibody; Titration: 1.0 ug/ml; Positive Control: HCT15 Whole Cell