

## Product datasheet for **TA337699**

### **PADI6 Rabbit Polyclonal Antibody**

#### **Product data:**

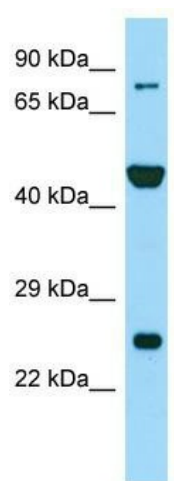
Product Type:	Primary Antibodies
Applications:	WB
Recommended Dilution:	WB
Reactivity:	Human
Host:	Rabbit
Isotype:	IgG
Clonality:	Polyclonal
Immunogen:	The immunogen for anti-PADI6 antibody is: synthetic peptide directed towards the N-terminal region of Human PADI6. Synthetic peptide located within the following region: GAILLVNCNPADVGQQLLEDKKTKKVIFSEEITNLSQMTLNVQGPSCILKK
Formulation:	Liquid. Purified antibody supplied in 1x PBS buffer with 0.09% (w/v) sodium azide and 2% sucrose. <i>Note that this product is shipped as lyophilized powder to China customers.</i>
Purification:	Affinity Purified
Conjugation:	Unconjugated
Storage:	Store at -20°C as received.
Stability:	Stable for 12 months from date of receipt.
Predicted Protein Size:	78 kDa
Gene Name:	peptidyl arginine deiminase 6
Database Link:	<a href="#">NP_997304</a> <a href="#">Entrez Gene 353238 Human</a> <a href="#">Q6TGC4</a>
Background:	This gene encodes a member of the peptidyl arginine deiminase family of enzymes, which catalyze the post-translational deimination of proteins by converting arginine residues into citrullines in the presence of calcium ions. The family members have distinct substrate specificities and tissue-specific expression patterns. This protein may play a role in cytoskeletal reorganization in the egg and in early embryo development.
Synonyms:	hPADVI



[View online »](#)

Note: Immunogen Sequence Homology: Human: 100%

### Product images:



Host: Rabbit; Target Name: PADI6; Sample  
Tissue: RPMI-8226 Whole Cell lysates; Antibody  
Dilution: 1.0 ug/ml