

## Product datasheet for **TA337697**

### PRKAR1B Rabbit Polyclonal Antibody

#### Product data:

Product Type:	Primary Antibodies
Applications:	WB
Recommended Dilution:	WB
Reactivity:	Mouse, Human
Host:	Rabbit
Isotype:	IgG
Clonality:	Polyclonal
Immunogen:	The immunogen for anti-PRKAR1B antibody: synthetic peptide directed towards the middle region of human PRKAR1B. Synthetic peptide located within the following region: LNRPRAATVARGPLKCVKLDPRPRFERVLGPCSEILKRNIQRYNSFISLT
Formulation:	Liquid. Purified antibody supplied in 1x PBS buffer with 0.09% (w/v) sodium azide and 2% sucrose. <i>Note that this product is shipped as lyophilized powder to China customers.</i>
Purification:	Affinity Purified
Conjugation:	Unconjugated
Storage:	Store at -20°C as received.
Stability:	Stable for 12 months from date of receipt.
Predicted Protein Size:	43 kDa
Gene Name:	protein kinase cAMP-dependent type I regulatory subunit beta
Database Link:	<a href="#">NP_002726</a> <a href="#">Entrez Gene 19085 Mouse</a> <a href="#">Entrez Gene 5575 Human</a> <a href="#">P31321</a>



[View online »](#)

**Background:**

Cyclic AMP-dependent protein kinase A (PKA) is an essential enzyme in the signaling pathway of the second messenger cAMP. Through phosphorylation of target proteins, PKA controls many biochemical events in the cell including regulation of metabolism, ion transport, and gene transcription. The PKA holoenzyme is composed of 2 regulatory and 2 catalytic subunits and dissociates from the regulatory subunits upon binding of cAMP. [supplied by OMIM, Jun 2009]. Transcript Variant: This variant (4) differs in the 5' UTR compared to variant 1. All 6 variants encode the same protein. Sequence Note: This RefSeq record was created from transcript and genomic sequence data to make the sequence consistent with the reference genome assembly. The genomic coordinates used for the transcript record were based on transcript alignments. Publication Note: This RefSeq record includes a subset of the publications that are available for this gene. Please see the Gene record to access additional publications. ##Evidence-Data-START## CDS exon combination :: AL833563.1, BC026734.1 [ECO:0000331] RNAseq introns :: mixed/partial sample support ERS025087, ERS025093 [ECO:0000350] ##Evidence-Data-END## COMPLETENESS: complete on the 3' end.

**Synonyms:**

PRKAR1

**Note:**

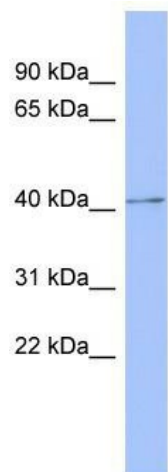
Immunogen Sequence Homology: Dog: 100%; Pig: 100%; Rat: 100%; Human: 100%; Mouse: 100%; Bovine: 100%; Zebrafish: 100%; Guinea pig: 100%; Horse: 92%; Sheep: 85%; Rabbit: 85%

**Protein Families:**

Druggable Genome

**Protein Pathways:**

Apoptosis, Insulin signaling pathway

**Product images:**

WB Suggested Anti-PRKAR1B Antibody Titration:  
0.2-1 ug/ml; ELISA Titer: 1:1562500; Positive  
Control: Human heart