

Product datasheet for **TA337694**

Prolyl Endopeptidase (PREP) Rabbit Polyclonal Antibody

Product data:

| | |
|-------------------------|---|
| Product Type: | Primary Antibodies |
| Applications: | WB |
| Recommended Dilution: | WB |
| Reactivity: | Human |
| Host: | Rabbit |
| Isotype: | IgG |
| Clonality: | Polyclonal |
| Immunogen: | The immunogen for anti-PREP antibody: synthetic peptide directed towards the middle region of human PREP. Synthetic peptide located within the following region: LHSLKFIATLQYIVGRSRKQSNPLLIHVDTKAGHGAGKPTAKVIEEVSDM |
| Formulation: | Liquid. Purified antibody supplied in 1x PBS buffer with 0.09% (w/v) sodium azide and 2% sucrose. <i>Note that this product is shipped as lyophilized powder to China customers.</i> |
| Purification: | Affinity Purified |
| Conjugation: | Unconjugated |
| Storage: | Store at -20°C as received. |
| Stability: | Stable for 12 months from date of receipt. |
| Predicted Protein Size: | 81 kDa |
| Gene Name: | prolyl endopeptidase |
| Database Link: | NP_002717 Entrez Gene 5550 Human P48147 |
| Background: | The protein encoded by this gene is a cytosolic prolyl endopeptidase that cleaves peptide bonds on the C-terminal side of prolyl residues within peptides that are up to approximately 30 amino acids long. Prolyl endopeptidases have been reported to be involved in the maturation and degradation of peptide hormones and neuropeptides. [provided by RefSeq, Jul 2008] |
| Synonyms: | PE; PEP |

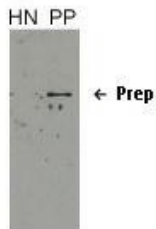


[View online »](#)

Note: Immunogen Sequence Homology: Dog: 100%; Pig: 100%; Rat: 100%; Horse: 100%; Human: 100%; Mouse: 100%; Bovine: 100%; Rabbit: 100%; Guinea pig: 100%; Zebrafish: 93%

Protein Families: Druggable Genome, Protease

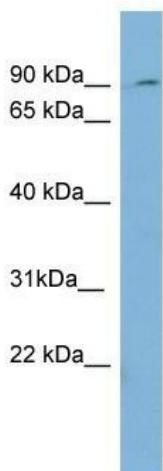
Product images:



PREP antibody - middle region (ARP56414_P050) validated by WB using neuroblastome, purified prep at 1:1000.

Legend
 HN-- human neuroblastome cells (10ug)
 PP-- purified prep (1-2ug)

3 minute exposure



WB Suggested Anti-PREP Antibody Titration: 0.2-1 ug/ml; ELISA Titer: 1:312500; Positive Control: HT1080 cell lysate PREP is strongly supported by BioGPS gene expression data to be expressed in Human HT1080 cells