

## Product datasheet for **TA337691**

### PPP2R3A Rabbit Polyclonal Antibody

#### Product data:

Product Type:	Primary Antibodies
Applications:	WB
Recommended Dilution:	WB
Reactivity:	Human
Host:	Rabbit
Isotype:	IgG
Clonality:	Polyclonal
Immunogen:	The immunogen for anti-PPP2R3A antibody: synthetic peptide directed towards the N terminal of human PPP2R3A. Synthetic peptide located within the following region: SSSVEEKPLSHRNSLDTNLTSMFLQNFSEEDLVTQILEKHKIDNFSSGTD
Formulation:	Liquid. Purified antibody supplied in 1x PBS buffer with 0.09% (w/v) sodium azide and 2% sucrose. <i>Note that this product is shipped as lyophilized powder to China customers.</i>
Purification:	Affinity Purified
Conjugation:	Unconjugated
Storage:	Store at -20°C as received.
Stability:	Stable for 12 months from date of receipt.
Predicted Protein Size:	130 kDa
Gene Name:	protein phosphatase 2 regulatory subunit B"alpha
Database Link:	<a href="#">NP_002709</a> <a href="#">Entrez Gene 5523 Human</a> <a href="#">Q06190</a>



[View online »](#)

**Background:**

This gene encodes one of the regulatory subunits of the protein phosphatase 2. Protein phosphatase 2 (formerly named type 2A) is one of the four major Ser/Thr phosphatases and is implicated in the negative control of cell growth and division. Protein phosphatase 2 holoenzymes are heterotrimeric proteins composed of a structural subunit A, a catalytic subunit C, and a regulatory subunit B. The regulatory subunit is encoded by a diverse set of genes that have been grouped into the B/PR55, B'/PR61, and B''/PR72 families. These different regulatory subunits confer distinct enzymatic specificities and intracellular localizations to the holoenzyme. The product of this gene belongs to the B'' family. The B'' family has been further divided into subfamilies. The product of this gene belongs to the alpha subfamily of regulatory subunit B''. Alternative splicing results in multiple transcript variants encoding different isoforms. [provided by RefSeq, Jun 2010]

**Synonyms:**

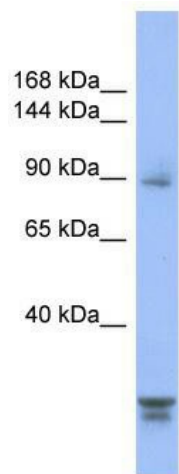
PPP2R3; PR72; PR130

**Note:**

Immunogen Sequence Homology: Human: 100%; Dog: 93%; Mouse: 93%; Rabbit: 93%; Rat: 92%; Pig: 86%; Horse: 86%; Bovine: 86%; Guinea pig: 86%

**Protein Families:**

Druggable Genome, Phosphatase

**Product images:**

WB Suggested Anti-PPP2R3A Antibody Titration:  
0.2-1 ug/ml; ELISA Titer: 1:62500; Positive Control:  
293T cell lysate