

Product datasheet for **TA337690**

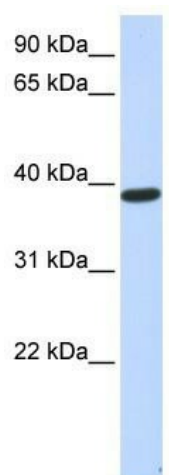
PPP1R7 Rabbit Polyclonal Antibody

Product data:

Product Type:	Primary Antibodies
Applications:	WB
Recommended Dilution:	WB
Reactivity:	Human
Host:	Rabbit
Isotype:	IgG
Clonality:	Polyclonal
Immunogen:	The immunogen for anti-PPP1R7 antibody: synthetic peptide directed towards the middle region of human PPP1R7. Synthetic peptide located within the following region: QNLIKCIENLEELQSLRELDLYDNQIKKIENTEALTELEILDISFNLLRN
Formulation:	Liquid. Purified antibody supplied in 1x PBS buffer with 0.09% (w/v) sodium azide and 2% sucrose. <i>Note that this product is shipped as lyophilized powder to China customers.</i>
Purification:	Affinity Purified
Conjugation:	Unconjugated
Storage:	Store at -20°C as received.
Stability:	Stable for 12 months from date of receipt.
Predicted Protein Size:	41 kDa
Gene Name:	protein phosphatase 1 regulatory subunit 7
Database Link:	NP_002703 Entrez Gene 5510 Human Q15435
Background:	PPP1R7 is the regulatory subunit of protein phosphatase 1.
Synonyms:	SDS22
Note:	Immunogen Sequence Homology: Pig: 100%; Rat: 100%; Horse: 100%; Human: 100%; Mouse: 100%; Rabbit: 100%; Guinea pig: 100%; Dog: 93%; Bovine: 93%; Zebrafish: 86%
Protein Families:	Druggable Genome, Phosphatase



[View online »](#)

Product images:

WB Suggested Anti-PPP1R7 Antibody Titration:
0.2-1 ug/ml; ELISA Titer: 1:312500; Positive
Control: Human Muscle