

Product datasheet for **TA337689**

DNA Polymerase beta (POLB) Rabbit Polyclonal Antibody

Product data:

Product Type:	Primary Antibodies
Applications:	WB
Recommended Dilution:	WB
Reactivity:	Human
Host:	Rabbit
Isotype:	IgG
Clonality:	Polyclonal
Immunogen:	The immunogen for anti-POLB antibody: synthetic peptide directed towards the middle region of human POLB. Synthetic peptide located within the following region: GPSAARKFVDEGIKTLEDLRKNEDKLNHHQRIGLKYFGDFEKRIPREML
Formulation:	Liquid. Purified antibody supplied in 1x PBS buffer with 0.09% (w/v) sodium azide and 2% sucrose. <i>Note that this product is shipped as lyophilized powder to China customers.</i>
Purification:	Affinity Purified
Conjugation:	Unconjugated
Storage:	Store at -20°C as received.
Stability:	Stable for 12 months from date of receipt.
Predicted Protein Size:	38 kDa
Gene Name:	polymerase (DNA) beta
Database Link:	NP_002681 Entrez Gene 5423 Human P06746
Background:	In eukaryotic cells, DNA polymerase beta (POLB) performs base excision repair (BER) required for DNA maintenance, replication, recombination, and drug resistance.
Synonyms:	MGC125976
Note:	Immunogen Sequence Homology: Dog: 100%; Pig: 100%; Rat: 100%; Goat: 100%; Horse: 100%; Human: 100%; Mouse: 100%; Bovine: 100%; Rabbit: 100%; Guinea pig: 100%; Zebrafish: 79%

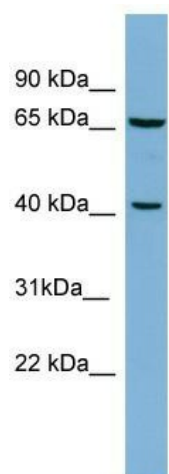


[View online »](#)

Protein Families: Druggable Genome

Protein Pathways: Base excision repair

Product images:



WB Suggested Anti-POLB Antibody Titration: 0.2-1 ug/ml; ELISA Titer: 1:312500; Positive Control: HT1080 cell lysate