

Product datasheet for **TA337679**

PGM1 Rabbit Polyclonal Antibody

Product data:

Product Type:	Primary Antibodies
Applications:	WB
Recommended Dilution:	WB
Reactivity:	Human
Host:	Rabbit
Isotype:	IgG
Clonality:	Polyclonal
Immunogen:	The immunogen for anti-PGM1 antibody: synthetic peptide directed towards the middle region of human PGM1. Synthetic peptide located within the following region: TVEKADNFEYSDPVDGSGISRNLRLIFTDGSRIVFRSLGSGSAGATIRL
Formulation:	Liquid. Purified antibody supplied in 1x PBS buffer with 0.09% (w/v) sodium azide and 2% sucrose. <i>Note that this product is shipped as lyophilized powder to China customers.</i>
Purification:	Affinity Purified
Conjugation:	Unconjugated
Storage:	Store at -20°C as received.
Stability:	Stable for 12 months from date of receipt.
Predicted Protein Size:	61 kDa
Gene Name:	phosphoglucomutase 1
Database Link:	NP_002624 Entrez Gene 5236 Human P36871
Background:	PGM1 is an isozyme of phosphoglucomutase (PGM) and belongs to the phosphohexose mutase family. There are several PGM isozymes, which are encoded by different genes and catalyze the transfer of phosphate between the 1 and 6 positions of glucose. In most cell types, this PGM isozyme is predominant, representing about 90% of total PGM activity. In red cells, PGM2 is a major isozyme. This gene is highly polymorphic. Mutations in this gene cause glycogen storage disease type 14.



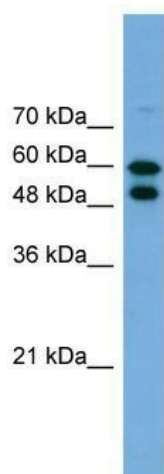
[View online »](#)

Synonyms: CDG1T; GSD14

Note: Immunogen Sequence Homology: Pig: 100%; Rat: 100%; Human: 100%; Mouse: 100%; Guinea pig: 100%; Dog: 93%; Horse: 93%; Bovine: 93%; Rabbit: 93%; Zebrafish: 93%; Goat: 85%

Protein Pathways: Amino sugar and nucleotide sugar metabolism, Galactose metabolism, Glycolysis / Gluconeogenesis, Metabolic pathways, Pentose phosphate pathway, Starch and sucrose metabolism

Product images:



WB Suggested Anti-PGM1 Antibody; Titration: 1.0 ug/ml; Positive Control: Transfected 293T