

Product datasheet for **TA337678**

Properdin (CFP) Rabbit Polyclonal Antibody

Product data:

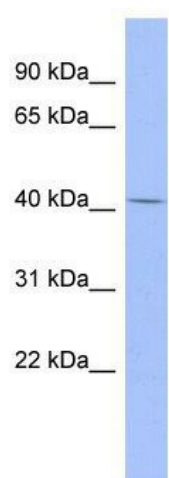
Product Type:	Primary Antibodies
Applications:	WB
Recommended Dilution:	WB
Reactivity:	Human
Host:	Rabbit
Isotype:	IgG
Clonality:	Polyclonal
Immunogen:	The immunogen for anti-CFP antibody: synthetic peptide directed towards the middle region of human CFP. Synthetic peptide located within the following region: SMVEGQGKENVTFWGRPLPRCEELQGQKLWEEKRPCLHVPACKDPEEEE
Formulation:	Liquid. Purified antibody supplied in 1x PBS buffer with 0.09% (w/v) sodium azide and 2% sucrose. <i>Note that this product is shipped as lyophilized powder to China customers.</i>
Purification:	Affinity Purified
Conjugation:	Unconjugated
Storage:	Store at -20°C as received.
Stability:	Stable for 12 months from date of receipt.
Predicted Protein Size:	48 kDa
Gene Name:	complement factor properdin
Database Link:	NP_002612 Entrez Gene 5199 Human P27918
Background:	CFP is a plasma glycoprotein that positively regulates the alternative complement pathway of the innate immune system. This protein binds to many microbial surfaces and apoptotic cells and stabilizes the C3- and C5-convertase enzyme complexes in a feedback
Synonyms:	BFD; PFC; PFD; PROPERDIN
Note:	Immunogen Sequence Homology: Human: 100%; Rat: 93%; Mouse: 93%; Rabbit: 93%; Horse: 86%; Bovine: 83%; Dog: 79%; Pig: 79%; Guinea pig: 79%



[View online »](#)

Protein Families: Secreted Protein

Product images:



WB Suggested Anti-CFP Antibody Titration: 0.2-1 ug/ml; ELISA Titer: 1:1562500; Positive Control: Human Thymus