

Product datasheet for **TA337676**

PCOLCE Rabbit Polyclonal Antibody

Product data:

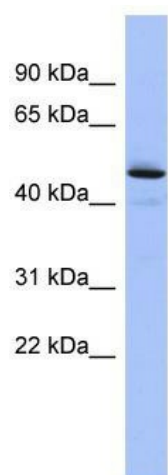
Product Type:	Primary Antibodies
Applications:	WB
Recommended Dilution:	WB
Reactivity:	Human
Host:	Rabbit
Isotype:	IgG
Clonality:	Polyclonal
Immunogen:	The immunogen for anti-PCOLCE antibody: synthetic peptide directed towards the middle region of human PCOLCE. Synthetic peptide located within the following region: LLVQFVSDLSVTADGFSASYKTLPRGTAKEGQGPGPKRGTEPKVKLPPKS
Formulation:	Liquid. Purified antibody supplied in 1x PBS buffer with 0.09% (w/v) sodium azide and 2% sucrose. <i>Note that this product is shipped as lyophilized powder to China customers.</i>
Purification:	Affinity Purified
Conjugation:	Unconjugated
Storage:	Store at -20°C as received.
Stability:	Stable for 12 months from date of receipt.
Predicted Protein Size:	48 kDa
Gene Name:	procollagen C-endopeptidase enhancer
Database Link:	NP_002584 Entrez Gene 5118 Human Q15113
Background:	PCOLCE binds to the C-terminal propeptide of type I procollagen and enhances procollagen C-proteinase activity.
Synonyms:	PCPE; PCPE-1; PCPE1
Note:	Immunogen Sequence Homology: Dog: 100%; Pig: 100%; Rat: 100%; Horse: 100%; Human: 100%; Mouse: 100%; Bovine: 100%; Guinea pig: 100%; Zebrafish: 86%



[View online »](#)

Protein Families: Secreted Protein

Product images:



WB Suggested Anti-PCOLCE Antibody Titration:
0.2-1 ug/ml; ELISA Titer: 1:312500; Positive
Control: Human Liver