

## Product datasheet for **TA337675**

### SERPINB2 Rabbit Polyclonal Antibody

#### Product data:

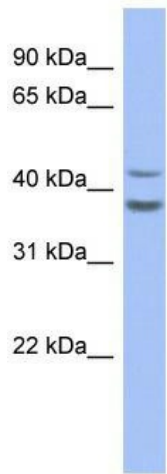
Product Type:	Primary Antibodies
Applications:	WB
Recommended Dilution:	WB
Reactivity:	Human
Host:	Rabbit
Isotype:	IgG
Clonality:	Polyclonal
Immunogen:	The immunogen for anti-SERPINB2 antibody: synthetic peptide directed towards the middle region of human SERPINB2. Synthetic peptide located within the following region: GKIPNLLPEGSVDGDTRMVLVNAVYFKGKWKTPFEKKNGLYPFRVNSAQ
Formulation:	Liquid. Purified antibody supplied in 1x PBS buffer with 0.09% (w/v) sodium azide and 2% sucrose. <i>Note that this product is shipped as lyophilized powder to China customers.</i>
Purification:	Affinity Purified
Conjugation:	Unconjugated
Storage:	Store at -20°C as received.
Stability:	Stable for 12 months from date of receipt.
Predicted Protein Size:	44 kDa
Gene Name:	serpin family B member 2
Database Link:	<a href="#">NP_002566</a> <a href="#">Entrez Gene 5055 Human P05120</a>
Background:	SERPINB2 inhibits urokinase-type plasminogen activator. The monocyte derived PAI-2 is distinct from the endothelial cell-derived PAI-1.
Synonyms:	HsT1201; PAI; PAI-2; PAI2; PLANH2
Note:	Immunogen Sequence Homology: Dog: 100%; Human: 100%; Mouse: 100%; Rabbit: 100%; Horse: 93%; Pig: 92%; Guinea pig: 92%; Sheep: 86%; Bovine: 86%; Rat: 85%



[View online »](#)

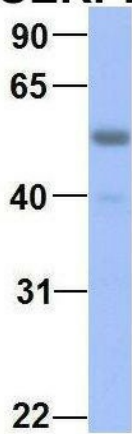
Protein Families: Druggable Genome, Secreted Protein

**Product images:**



WB Suggested Anti-SERPINB2 Antibody Titration: 0.2-1 ug/ml; ELISA Titer: 1:62500; Positive Control: Human Liver

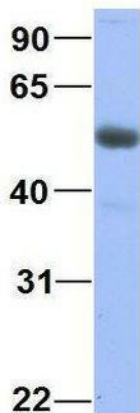
**SERPINB2**



Rabbit Anti-SERPINB2  
 Sample Type: Human Adult Placenta  
 Antibody Concentration: 1ug/mL

2Hum. Adult Placenta; Host: Rabbit; Target Name: CHAD; Sample Tissue: Human Adult Placenta; Antibody Dilution: 1.0ug/ml

## SERPINB2



Rabbit Anti-SERPINB2  
Sample Type: Human Fetal Lung  
Antibody Concentration: 1ug/mL

3Hum. Fetal Lung; Host: Rabbit; Target Name:  
NSUN6; Sample Tissue: Human Fetal Lung;  
Antibody Dilution: 1.0ug/ml