

Product datasheet for **TA337672**

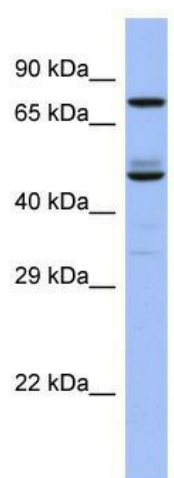
TBC1D25 Rabbit Polyclonal Antibody

Product data:

Product Type:	Primary Antibodies
Applications:	WB
Recommended Dilution:	WB
Reactivity:	Human
Host:	Rabbit
Isotype:	IgG
Clonality:	Polyclonal
Immunogen:	The immunogen for Anti-TBC1D25 antibody is: synthetic peptide directed towards the C-terminal region of HUMAN TBC1D25. Synthetic peptide located within the following region: STFEDAVDHLATASQGPGGGRLLRQASLDGLQQLRDNMGSRRLDPLVQLP
Formulation:	Liquid. Purified antibody supplied in 1x PBS buffer with 0.09% (w/v) sodium azide and 2% sucrose.
Purification:	Affinity Purified
Conjugation:	Unconjugated
Storage:	Store at -20°C as received.
Stability:	Stable for 12 months from date of receipt.
Predicted Protein Size:	75 kDa
Gene Name:	TBC1 domain family member 25
Database Link:	NP_002527 Entrez Gene 4943 Human Q3MII6
Background:	This gene encodes a protein with a TBC domain and may function as a Rab GTPase activating protein. This gene was previously known as ornithine aminotransferase-like 1, but has no similarity to ornithine aminotransferase.
Synonyms:	MG81; OATL1
Note:	Immunogen Sequence Homology: Rat: 100%; Human: 100%; Mouse: 100%; Rabbit: 100%; Pig: 93%; Horse: 93%; Bovine: 92%; Guinea pig: 92%; Dog: 86%


[View online »](#)

Product images:



Host: Rabbit; Target Name: TBC1D25; Sample
Tissue: Fetal Small Intestine lysates; Antibody
Dilution: 1.0ug/ml