

## Product datasheet for **TA337671**

### TBC1D25 Rabbit Polyclonal Antibody

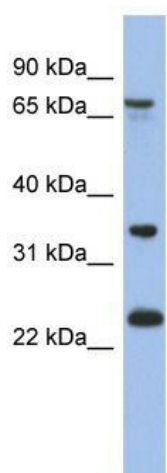
#### Product data:

Product Type:	Primary Antibodies
Applications:	WB
Recommended Dilution:	WB
Reactivity:	Human
Host:	Rabbit
Isotype:	IgG
Clonality:	Polyclonal
Immunogen:	The immunogen for anti-TBC1D25 antibody: synthetic peptide directed towards the N terminal of human TBC1D25. Synthetic peptide located within the following region: KVQQVLSWSYGEDVKPFKPLSDAEFHTYLNHEGQLSRPEELRLRIYHGG
Formulation:	Liquid. Purified antibody supplied in 1x PBS buffer with 0.09% (w/v) sodium azide and 2% sucrose. <i>Note that this product is shipped as lyophilized powder to China customers.</i>
Purification:	Affinity Purified
Conjugation:	Unconjugated
Storage:	Store at -20°C as received.
Stability:	Stable for 12 months from date of receipt.
Predicted Protein Size:	76 kDa
Gene Name:	TBC1 domain family member 25
Database Link:	<a href="#">NP_002527</a> <a href="#">Entrez Gene 4943 Human</a> <a href="#">Q3MII6</a>
Background:	This gene encodes a protein with a TBC domain and may function as a Rab GTPase activating protein. This gene was previously known as ornithine aminotransferase-like 1, but has no similarity to ornithine aminotransferase.
Synonyms:	MG81; OATL1
Note:	Immunogen Sequence Homology: Dog: 100%; Pig: 100%; Rat: 100%; Horse: 100%; Human: 100%; Mouse: 100%; Bovine: 100%; Rabbit: 100%; Guinea pig: 100%; Zebrafish: 85%



[View online »](#)

## Product images:



WB Suggested Anti-TBC1D25 Antibody Titration:  
0.2-1 ug/ml; ELISA Titer: 1:312500; Positive  
Control: 721\_B cell lysate