

## Product datasheet for **TA337669**

### **NPTX2 Rabbit Polyclonal Antibody**

#### **Product data:**

Product Type:	Primary Antibodies
Applications:	WB
Recommended Dilution:	WB
Reactivity:	Human
Host:	Rabbit
Isotype:	IgG
Clonality:	Polyclonal
Immunogen:	The immunogen for anti-NPTX2 antibody: synthetic peptide directed towards the N terminal of human NPTX2. Synthetic peptide located within the following region: VQQKETLGAQREAIRELTGKLARCEGLAGGKARGAGATGKDTMGDLPRDP
Formulation:	Liquid. Purified antibody supplied in 1x PBS buffer with 0.09% (w/v) sodium azide and 2% sucrose. <i>Note that this product is shipped as lyophilized powder to China customers.</i>
Purification:	Affinity Purified
Conjugation:	Unconjugated
Storage:	Store at -20°C as received.
Stability:	Stable for 12 months from date of receipt.
Predicted Protein Size:	47 kDa
Gene Name:	neuronal pentraxin 2
Database Link:	<a href="#">NP_002514</a> <a href="#">Entrez Gene 4885 Human P47972</a>

**Background:** This gene encodes a member of the family of neuronal pentraxins, synaptic proteins that are related to C-reactive protein. This protein is involved in excitatory synapse formation. It also plays a role in clustering of alpha-amino-3-hydroxy-5-methyl-4-isoxazolepropionic acid (AMPA)-type glutamate receptors at established synapses, resulting in non-apoptotic cell death of dopaminergic nerve cells. Up-regulation of this gene in Parkinson disease (PD) tissues suggests that the protein may be involved in the pathology of PD.



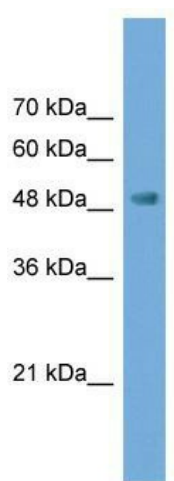
[View online »](#)

**Synonyms:** NARP; NP-II; NP2

**Note:** Immunogen Sequence Homology: Dog: 100%; Pig: 100%; Rat: 100%; Human: 100%; Mouse: 100%; Guinea pig: 100%; Bovine: 93%

**Protein Families:** Secreted Protein

**Product images:**



WB Suggested Anti-NPTX2 Antibody Titration: 0.2-1 ug/ml; ELISA Titer: 1:1562500; Positive Control: Transfected 293T