

Product datasheet for **TA337665**

NUBP1 Rabbit Polyclonal Antibody

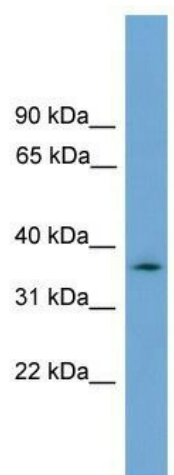
Product data:

Product Type:	Primary Antibodies
Applications:	WB
Recommended Dilution:	WB
Reactivity:	Human
Host:	Rabbit
Isotype:	IgG
Clonality:	Polyclonal
Immunogen:	The immunogen for anti-NUBP1 antibody: synthetic peptide directed towards the N terminal of human NUBP1. Synthetic peptide located within the following region: MEEVPHDCPGADSAQAGRGASCQGCPNQRLCASGAGATPDTAIEEIKEKM
Formulation:	Liquid. Purified antibody supplied in 1x PBS buffer with 0.09% (w/v) sodium azide and 2% sucrose. <i>Note that this product is shipped as lyophilized powder to China customers.</i>
Purification:	Affinity Purified
Conjugation:	Unconjugated
Storage:	Store at -20°C as received.
Stability:	Stable for 12 months from date of receipt.
Predicted Protein Size:	34 kDa
Gene Name:	nucleotide binding protein 1
Database Link:	NP_002475 Entrez Gene 4682 Human P53384
Background:	NUBP1 is a member of the NUBP/MRP subfamily of ATP-binding proteins
Synonyms:	NBP; NBP1; NBP35
Note:	Immunogen Sequence Homology: Rat: 100%; Human: 100%; Mouse: 100%; Bovine: 100%; Rabbit: 100%; Pig: 92%; Guinea pig: 92%; Dog: 85%; Horse: 85%



[View online »](#)

Product images:



WB Suggested Anti-NUBP1 Antibody Titration:
0.2-1 ug/ml; ELISA Titer: 1:312500; Positive
Control: U937 cell lysate