

Product datasheet for **TA337664**

MLK3 (MAP3K11) Rabbit Polyclonal Antibody

Product data:

| | |
|-------------------------|--|
| Product Type: | Primary Antibodies |
| Applications: | WB |
| Recommended Dilution: | WB |
| Reactivity: | Human |
| Host: | Rabbit |
| Isotype: | IgG |
| Clonality: | Polyclonal |
| Immunogen: | The immunogen for anti-MAP3K11 antibody: synthetic peptide directed towards the middle region of human MAP3K11. Synthetic peptide located within the following region: PVGQRSAKSPRREEEPRGGTVSPPPGTSRSAPGTPGTPRSPPLGLISRPR |
| Formulation: | Liquid. Purified antibody supplied in 1x PBS buffer with 0.09% (w/v) sodium azide and 2% sucrose. <i>Note that this product is shipped as lyophilized powder to China customers.</i> |
| Purification: | Affinity Purified |
| Conjugation: | Unconjugated |
| Storage: | Store at -20°C as received. |
| Stability: | Stable for 12 months from date of receipt. |
| Predicted Protein Size: | 93 kDa |
| Gene Name: | mitogen-activated protein kinase kinase kinase 11 |
| Database Link: | NP_002410 Entrez Gene 4296 Human Q16584 |
| Background: | The protein encoded by this gene is a member of the serine/threonine kinase family. This kinase contains a SH3 domain and a leucine zipper-basic motif. This kinase preferentially activates MAPK8/JNK kinase, and functions as a positive regulator of JNK signaling pathway. This kinase can directly phosphorylate, and activates I κ B kinase alpha and beta, and is found to be involved in the transcription activity of NF-kappaB mediated by Rho family GTPases and CDC42. [provided by RefSeq, Jul 2008] |



[View online »](#)

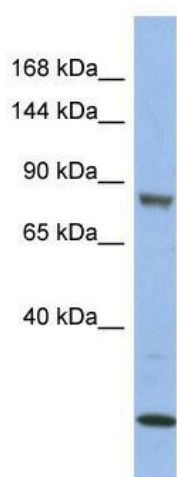
Synonyms: MEKK11; MLK-3; MLK3; PTK1; SPRK

Note: Immunogen Sequence Homology: Pig: 100%; Rat: 100%; Horse: 100%; Human: 100%; Mouse: 100%; Bovine: 100%; Rabbit: 100%; Guinea pig: 100%

Protein Families: Druggable Genome, Protein Kinase

Protein Pathways: MAPK signaling pathway

Product images:



WB Suggested Anti-MAP3K11 Antibody Titration: 0.2-1 ug/ml; ELISA Titer: 1:312500; Positive Control: HepG2 cell lysate MAP3K11 is supported by BioGPS gene expression data to be expressed in HepG2