

## Product datasheet for **TA337663**

### MIF Rabbit Polyclonal Antibody

#### Product data:

Product Type:	Primary Antibodies
Applications:	WB
Recommended Dilution:	WB
Reactivity:	Human, Rat
Host:	Rabbit
Isotype:	IgG
Clonality:	Polyclonal
Immunogen:	The immunogen for anti-MIF antibody: synthetic peptide directed towards the middle region of human MIF. Synthetic peptide located within the following region: PQYIAVHVVPDQLMAFGGSSEPCALCSLHSHGKIGGAQNRYSKLLCGLL
Formulation:	Liquid. Purified antibody supplied in 1x PBS buffer with 0.09% (w/v) sodium azide and 2% sucrose. <i>Note that this product is shipped as lyophilized powder to China customers.</i>
Purification:	Affinity Purified
Conjugation:	Unconjugated
Storage:	Store at -20°C as received.
Stability:	Stable for 12 months from date of receipt.
Predicted Protein Size:	12 kDa
Gene Name:	macrophage migration inhibitory factor (glycosylation-inhibiting factor)
Database Link:	<a href="#">NP_002406</a> <a href="#">Entrez Gene 81683 Rat</a> <a href="#">Entrez Gene 4282 Human</a> <a href="#">P14174</a>
Background:	This gene encodes a lymphokine involved in cell-mediated immunity, immunoregulation, and inflammation. It plays a role in the regulation of macrophage function in host defense through the suppression of anti-inflammatory effects of glucocorticoids. This lymphokine and the JAB1 protein form a complex in the cytosol near the peripheral plasma membrane, which may indicate an additional role in integrin signaling pathways.
Synonyms:	GIF; GLIF; MMIF



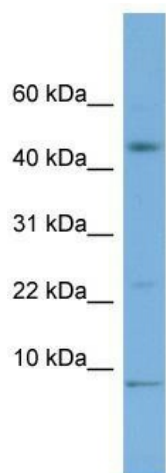
[View online »](#)

**Note:** Immunogen Sequence Homology: Dog: 100%; Pig: 100%; Rat: 100%; Horse: 100%; Human: 100%; Mouse: 100%; Sheep: 100%; Bovine: 100%; Rabbit: 100%; Guinea pig: 100%; Zebrafish: 85%

**Protein Families:** Druggable Genome

**Protein Pathways:** Phenylalanine metabolism, Tyrosine metabolism

**Product images:**



WB Suggested Anti-MIF Antibody Titration: 0.2-1 ug/ml; ELISA Titer: 1:1562500; Positive Control: Human heart