

Product datasheet for **TA337662**

Matrilin 3 (MATN3) Rabbit Polyclonal Antibody

Product data:

| | |
|-------------------------|---|
| Product Type: | Primary Antibodies |
| Applications: | WB |
| Recommended Dilution: | WB |
| Reactivity: | Human |
| Host: | Rabbit |
| Isotype: | IgG |
| Clonality: | Polyclonal |
| Immunogen: | The immunogen for anti-MATN3 antibody: synthetic peptide directed towards the middle region of human MATN3. Synthetic peptide located within the following region: IELYAVGVDRADMASLKMMASEPLEEHVYVETYGVIKLSRFQETFCA |
| Formulation: | Liquid. Purified antibody supplied in 1x PBS buffer with 0.09% (w/v) sodium azide and 2% sucrose. <i>Note that this product is shipped as lyophilized powder to China customers.</i> |
| Purification: | Affinity Purified |
| Conjugation: | Unconjugated |
| Storage: | Store at -20°C as received. |
| Stability: | Stable for 12 months from date of receipt. |
| Predicted Protein Size: | 50 kDa |
| Gene Name: | matrilin 3 |
| Database Link: | NP_002372 Entrez Gene 4148 Human O15232 |
| Background: | This gene encodes a member of von Willebrand factor A domain containing protein family. This family of proteins is thought to be involved in the formation of filamentous networks in the extracellular matrices of various tissues. This protein contains two von Willebrand factor A domains; it is present in the cartilage extracellular matrix and has a role in the development and homeostasis of cartilage and bone. Mutations in this gene result in multiple epiphyseal dysplasia. [provided by RefSeq, Jul 2008] |



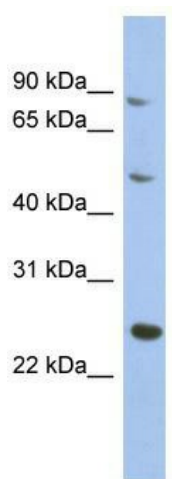
[View online »](#)

Synonyms: DIPOA; EDM5; HOA; OADIP; OS2

Note: Immunogen Sequence Homology: Pig: 100%; Human: 100%; Mouse: 100%; Guinea pig: 100%; Dog: 93%; Rat: 93%; Horse: 93%; Bovine: 93%; Zebrafish: 93%; Rabbit: 86%

Protein Families: Druggable Genome, Secreted Protein

Product images:



WB Suggested Anti-MATN3 Antibody Titration:
0.2-1 ug/ml; ELISA Titer: 1:62500; Positive Control:
293T cell lysate