

## Product datasheet for **TA337660**

### MARK3 Rabbit Polyclonal Antibody

#### Product data:

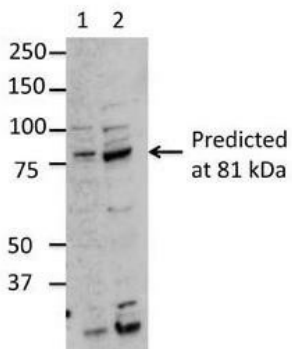
Product Type:	Primary Antibodies
Applications:	WB
Recommended Dilution:	WB
Reactivity:	Human, Mouse
Host:	Rabbit
Isotype:	IgG
Clonality:	Polyclonal
Immunogen:	The immunogen for anti-MARK3 antibody: synthetic peptide directed towards the middle region of human MARK3. Synthetic peptide located within the following region: ATYNGPPASPSLSHEATPLSQTRSRGSTNLFSLKLSKLTRSRNVSAEQKD
Formulation:	Liquid. Purified antibody supplied in 1x PBS buffer with 0.09% (w/v) sodium azide and 2% sucrose. <i>Note that this product is shipped as lyophilized powder to China customers.</i>
Purification:	Affinity Purified
Conjugation:	Unconjugated
Storage:	Store at -20°C as received.
Stability:	Stable for 12 months from date of receipt.
Predicted Protein Size:	81 kDa
Gene Name:	microtubule affinity regulating kinase 3
Database Link:	<a href="#">NP_002367</a> <a href="#">Entrez Gene 17169 Mouse</a> <a href="#">Entrez Gene 4140 Human</a> <a href="#">P27448</a>
Background:	MARK3 is involved in the specific phosphorylation of microtubule-associated proteins for tau, MAP2 and MAP4. Phosphorylates CDC25C on 'Ser-216'.
Synonyms:	CTAK1; KP78; Par-1a; PAR1A
Note:	Immunogen Sequence Homology: Dog: 100%; Pig: 100%; Rat: 100%; Horse: 100%; Human: 100%; Mouse: 100%; Bovine: 100%; Rabbit: 100%; Guinea pig: 100%; Zebrafish: 86%



[View online »](#)

Protein Families: Druggable Genome, Protein Kinase

**Product images:**



Sample Type: Lane 1 = 10ug mouse brain extract; Lane 2 = 50ug mouse brain extract; Primary Antibody Dilution: Anti-MARK3 1:2500; Submitted By: Dr. Veronique Dorval, Laval University

Lane 1 = 10µg mouse brain extract  
Lane 2 = 50µg mouse brain extract



WB Suggested Anti-MARK3 Antibody Titration: 0.2-1 ug/ml; ELISA Titer: 1:312500; Positive Control: 293T cell lysate MARK3 is supported by BioGPS gene expression data to be expressed in HEK293T