

Product datasheet for **TA337657**

MAGEB3 Rabbit Polyclonal Antibody

Product data:

Product Type:	Primary Antibodies
Applications:	WB
Recommended Dilution:	WB
Reactivity:	Human
Host:	Rabbit
Isotype:	IgG
Clonality:	Polyclonal
Immunogen:	The immunogen for anti-MAGEB3 antibody: synthetic peptide directed towards the N terminal of human MAGEB3. Synthetic peptide located within the following region: MPRGQKSTLHAREKRQQTRGQTQDHQGAQITATNKKKVSFSSPLILGATI
Formulation:	Liquid. Purified antibody supplied in 1x PBS buffer with 0.09% (w/v) sodium azide and 2% sucrose. <i>Note that this product is shipped as lyophilized powder to China customers.</i>
Purification:	Affinity Purified
Conjugation:	Unconjugated
Storage:	Store at -20°C as received.
Stability:	Stable for 12 months from date of receipt.
Predicted Protein Size:	39 kDa
Gene Name:	MAGE family member B3
Database Link:	NP_002356 Entrez Gene 4114 Human O15480
Background:	This gene is a MAGE-B subfamily member of the MAGE gene family. MAGE family member proteins direct the expression of tumor antigens recognized on a human melanoma by autologous cytolytic T lymphocytes. There are two known clusters of MAGE genes on chromosome X. The members of the MAGE-A subfamily are located in the Xq28 region, while the members of the MAGE-B subfamily are clustered in the Xp21 region. [provided by RefSeq, Jul 2008]

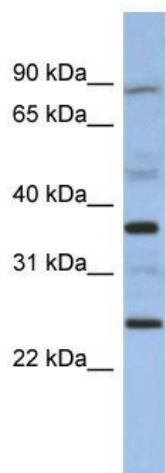


[View online »](#)

Synonyms: CT3.5

Note: Immunogen Sequence Homology: Human: 100%; Bovine: 85%; Rabbit: 79%; Dog: 77%; Pig: 77%; Rat: 77%; Horse: 77%; Mouse: 77%; Guinea pig: 77%

Product images:



WB Suggested Anti-MAGEB3 Antibody Titration:
0.2-1 ug/ml; ELISA Titer: 1:62500; Positive Control:
Human brain