

## Product datasheet for **TA337656**

### MAGEB2 Rabbit Polyclonal Antibody

#### Product data:

Product Type:	Primary Antibodies
Applications:	WB
Recommended Dilution:	WB
Reactivity:	Human
Host:	Rabbit
Isotype:	IgG
Clonality:	Polyclonal
Immunogen:	The immunogen for anti-MAGEB2 antibody: synthetic peptide directed towards the N terminal of human MAGEB2. Synthetic peptide located within the following region: AAAAGVSSTKSKKGAKSHQGEKNASSSQASTSTKSPSEDPLTRKSGSLVQ
Formulation:	Liquid. Purified antibody supplied in 1x PBS buffer with 0.09% (w/v) sodium azide and 2% sucrose. <i>Note that this product is shipped as lyophilized powder to China customers.</i>
Purification:	Affinity Purified
Conjugation:	Unconjugated
Storage:	Store at -20°C as received.
Stability:	Stable for 12 months from date of receipt.
Predicted Protein Size:	35 kDa
Gene Name:	MAGE family member B2
Database Link:	<a href="#">NP_002355</a> <a href="#">Entrez Gene 4113 Human</a> <a href="#">O15479</a>



[View online »](#)

**Background:**

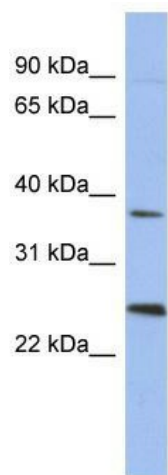
This gene is a member of the MAGEB gene family. The members of this family have their entire coding sequences located in the last exon, and the encoded proteins show 50 to 68% sequence identity to each other. The promoters and first exons of the MAGEB genes show considerable variability, suggesting that the existence of this gene family enables the same function to be expressed under different transcriptional controls. This gene is localized in the DSS (dosage-sensitive sex reversal) critical region. It is expressed in testis and placenta, and in a significant fraction of tumors of various histological types. The MAGEB genes are clustered on chromosome Xp22-p21. [provided by RefSeq, Jul 2008]

**Synonyms:**

CT3.2; DAM6; MAGE-XP-2

**Note:**

Immunogen Sequence Homology: Human: 100%

**Product images:**

WB Suggested Anti-MAGEB2 Antibody Titration:  
0.2-1 ug/ml; ELISA Titer: 1:62500; Positive Control:  
Human Placenta