

## Product datasheet for **TA337646**

### IL13 receptor alpha 2 (IL13RA2) Rabbit Polyclonal Antibody

#### Product data:

|                         |  |
|-------------------------|--|
| Product Type:           | Primary Antibodies   |
| Applications:           | WB   |
| Recommended Dilution:   | WB   |
| Reactivity:             | Human, Mouse   |
| Host:                   | Rabbit   |
| Isotype:                | IgG  |
| Clonality:              | Polyclonal   |
| Immunogen:              | The immunogen for anti-IL13RA2 antibody: synthetic peptide directed towards the N terminal of human IL13RA2. Synthetic peptide located within the following region:<br>DHFKECTVEYELKYRNIGSETWKTITKLNLYKDGFDLNKGIEAKIHTLL   |
| Formulation:            | Liquid. Purified antibody supplied in 1x PBS buffer with 0.09% (w/v) sodium azide and 2% sucrose.<br><i>Note that this product is shipped as lyophilized powder to China customers.</i>  |
| Purification:           | Affinity Purified  |
| Conjugation:            | Unconjugated   |
| Storage:                | Store at -20°C as received.  |
| Stability:              | Stable for 12 months from date of receipt.   |
| Predicted Protein Size: | 22 kDa   |
| Gene Name:              | interleukin 13 receptor subunit alpha 2  |
| Database Link:          | <a href="#">NP_000631</a><br><a href="#">Entrez Gene 16165 Mouse</a> <a href="#">Entrez Gene 3598 Human</a><br><a href="#">Q14627</a>  |
| Background:             | IL13RA2 is closely related to IL13RA1, a subunit of the interleukin 13 receptor complex. This protein binds IL13 with high affinity, but lacks cytoplasmic domain, and does not appear to function as a signal mediator. It is reported to play a role in the internalization of IL13. |
| Synonyms:               | CD213A2; CT19; IL-13R; IL13BP  |
| Note:                   | Immunogen Sequence Homology: Dog: 100%; Pig: 100%; Rat: 100%; Human: 100%; Horse: 93%; Bovine: 93%; Guinea pig: 93%; Mouse: 86%; Rabbit: 86%   |

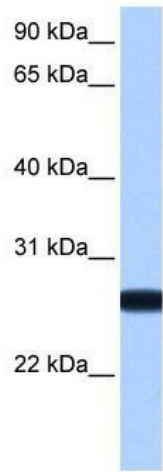


[View online »](#)

**Protein Families:** Druggable Genome, Transmembrane

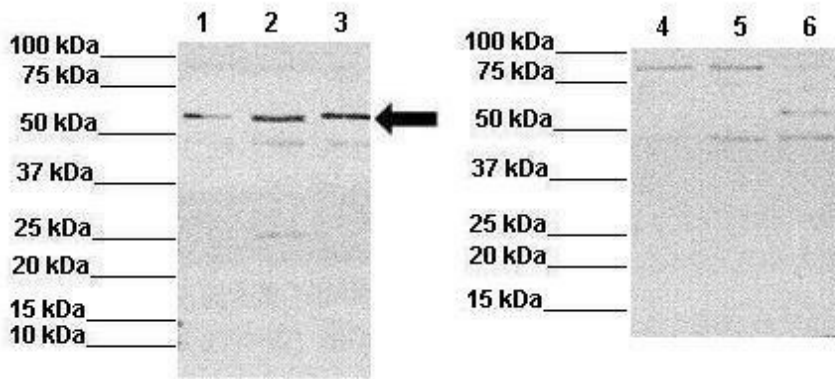
**Protein Pathways:** Jak-STAT signaling pathway

**Product images:**



WB Suggested Anti-IL13RA2 Antibody Titration: 0.2-1 ug/ml; Positive Control: MCF7 cell lysate

**IL13RA2**



Sample Type: Lane 1: 60 ug mouse CT26 lysate  
 Lane 2: 60 ug mouse MC38 lysate  
 Lane 3: 60 ug human HCT116 lysate  
 Lane 4: 60 ug mouse CT26 lysate + blocking peptide  
 Lane 5: 60 ug mouse MC38 lysate + blocking peptide  
 Lane 6: 60 ug human HCT116 lysate + blocki