

Product datasheet for **TA337645**

PLA2G4E Rabbit Polyclonal Antibody

Product data:

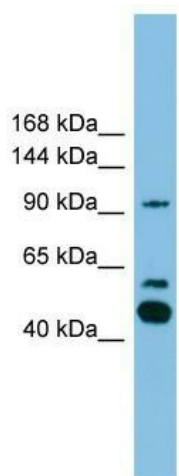
Product Type:	Primary Antibodies
Applications:	WB
Recommended Dilution:	WB
Reactivity:	Human
Host:	Rabbit
Isotype:	IgG
Clonality:	Polyclonal
Immunogen:	The immunogen for anti-PLA2G4E antibody: synthetic peptide directed towards the c terminal of human PLA2G4E. Synthetic peptide located within the following region: TFFPLINDTFRKYKAPGVERSPEELEQGQVDIYGPKTPYATKELTYTEAT
Formulation:	Liquid. Purified antibody supplied in 1x PBS buffer with 0.09% (w/v) sodium azide and 2% sucrose. <i>Note that this product is shipped as lyophilized powder to China customers.</i>
Purification:	Affinity Purified
Conjugation:	Unconjugated
Storage:	Store at -20°C as received.
Stability:	Stable for 12 months from date of receipt.
Predicted Protein Size:	96 kDa
Gene Name:	phospholipase A2 group IVE
Database Link:	NP_001073959 Entrez Gene 123745 Human Q3MJ16
Background:	The function of this protein remains unknown.
Synonyms:	FLJ45651; MGC126633; MGC126661
Note:	Immunogen Sequence Homology: Dog: 100%; Rat: 100%; Human: 100%; Bovine: 100%; Rabbit: 100%; Horse: 92%; Mouse: 92%; Pig: 87%; Guinea pig: 87%



[View online »](#)

Protein Pathways:

alpha-Linolenic acid metabolism, Arachidonic acid metabolism, Ether lipid metabolism, Fc epsilon RI signaling pathway, Fc gamma R-mediated phagocytosis, Glycerophospholipid metabolism, GnRH signaling pathway, Linoleic acid metabolism, Long-term depression, MAPK signaling pathway, Metabolic pathways, Vascular smooth muscle contraction, VEGF signaling pathway

Product images:

WB Suggested Anti-PLA2G4E Antibody Titration:
0.2-1 ug/ml; ELISA Titer: 1: 1562500; Positive
Control: HepG2 cell lysate