

## Product datasheet for **TA337644**

### SPATA24 Rabbit Polyclonal Antibody

#### Product data:

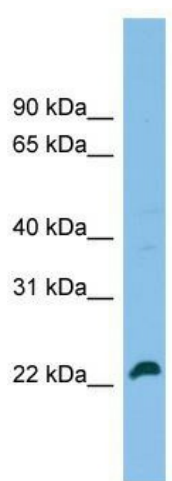
Product Type:	Primary Antibodies
Applications:	WB
Recommended Dilution:	WB
Reactivity:	Human
Host:	Rabbit
Isotype:	IgG
Clonality:	Polyclonal
Immunogen:	The immunogen for anti-SPATA24 antibody: synthetic peptide directed towards the c terminal of human SPATA24. Synthetic peptide located within the following region: LQQVISQQKQIFRNHMSDFRIQKQQESYMAQVLDQKHKKASGTRQARSHQ
Formulation:	Liquid. Purified antibody supplied in 1x PBS buffer with 0.09% (w/v) sodium azide and 2% sucrose. <i>Note that this product is shipped as lyophilized powder to China customers.</i>
Purification:	Affinity Purified
Conjugation:	Unconjugated
Storage:	Store at -20°C as received.
Stability:	Stable for 12 months from date of receipt.
Predicted Protein Size:	23 kDa
Gene Name:	spermatogenesis associated 24
Database Link:	<a href="#">NP_919272</a> <a href="#">Entrez Gene 202051 Human</a> <a href="#">Q86W54</a>
Background:	SPATA24 binds DNA with high affinity but does not bind to TATA boxes.SPATA24 synergises with GMNN and TBP in activation of TATA box-containing promoters and with GMNN and TBPL1 in activation of the NF1 TATA-less promoter.SPATA24 may play a role in cytoplasm movement and removal during spermiogenesis.
Synonyms:	CCDC161; T6441



[View online »](#)

**Note:** Immunogen Sequence Homology: Human: 100%; Rabbit: 100%; Dog: 93%; Pig: 93%; Horse: 93%; Rat: 86%; Guinea pig: 79%

### Product images:



WB Suggested Anti-SPATA24 Antibody Titration:  
0.2-1 ug/ml; ELISA Titer: 1: 312500; Positive  
Control: Jurkat cell lysate