

Product datasheet for **TA337643**

NXPH4 Rabbit Polyclonal Antibody

Product data:

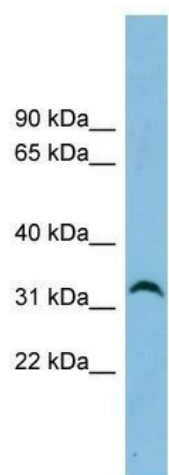
Product Type:	Primary Antibodies
Applications:	WB
Recommended Dilution:	WB
Reactivity:	Human
Host:	Rabbit
Isotype:	IgG
Clonality:	Polyclonal
Immunogen:	The immunogen for anti-NXPH4 antibody: synthetic peptide directed towards the N terminal of human NXPH4. Synthetic peptide located within the following region: MRLLPEWFLLLFGPWLLRKAVSAQIPESGRPQYLGLRPAAGAGAPGQQL
Formulation:	Liquid. Purified antibody supplied in 1x PBS buffer with 0.09% (w/v) sodium azide and 2% sucrose. <i>Note that this product is shipped as lyophilized powder to China customers.</i>
Purification:	Affinity Purified
Conjugation:	Unconjugated
Storage:	Store at -20°C as received.
Stability:	Stable for 12 months from date of receipt.
Predicted Protein Size:	34 kDa
Gene Name:	neurexophilin 4
Database Link:	NP_009155 Entrez Gene 11247 Human O95158
Background:	NXPH4 may be signaling molecules that resemble neuropeptides and that act by binding to alpha-neurexins and possibly other receptors.
Synonyms:	NPH4
Note:	Immunogen Sequence Homology: Human: 100%; Horse: 93%; Rat: 92%; Mouse: 92%; Dog: 86%; Pig: 86%; Bovine: 86%



[View online »](#)

Protein Families: Secreted Protein

Product images:



WB Suggested Anti-NXPH4 Antibody Titration:
0.2-1 ug/ml; ELISA Titer: 1: 1562500; Positive
Control: HepG2 cell lysate